

Teasdale Road, Walney, Barrow-in-furness, LA14 3SF

£245,000

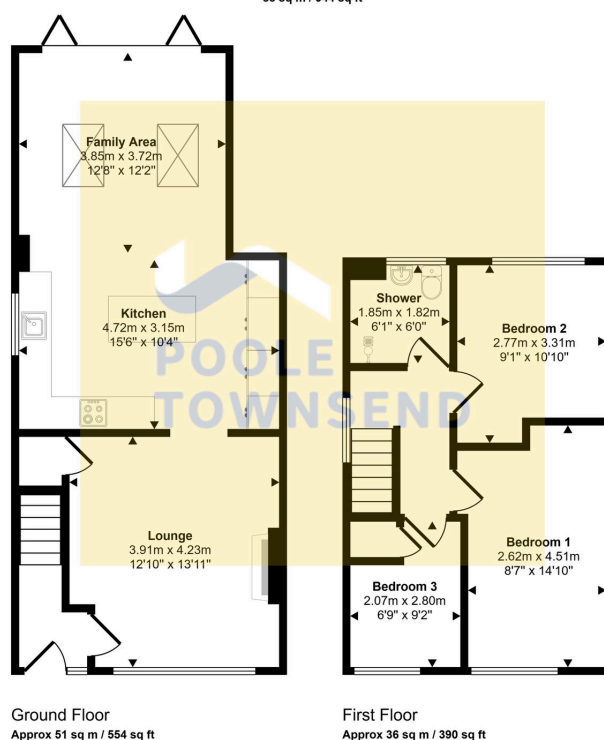
 3  1  0



- Superbly Presented
- Extended & Upgraded Home
- Modern Appliances & Fittings
- Off Road Parking
- Gardens Front & Rear
- Amenities within walking distance
- UPVC Double Glazing and Central Heating
- Coastal Location
- Council Tax Band
- EPC Rating



Approx Gross Internal Area
88 sq m / 944 sq ft



This floorplan is only for illustrative purposes and is not to scale. Measurements of rooms, doors, windows, and any items are approximate and no responsibility is taken for any error, omission or mis-statement. Icons of items such as bathroom suites are representations only and may not look like the real items. Made with Made Snappy 360.

This is a superbly presented family home that has been extended and upgraded to an excellent standard. A lovely size lounge leads through to a stunning kitchen with island and integrated appliances plus a bright and airy family area with bi-folding doors opening to the garden. There are also two double bedrooms, a single bedroom and a smartly finished shower room. Other features to note are the off-road parking, garden to the front and rear, gas-fired central heating and upvc DG. Bus service and The Crown pub are within walking distance.