



**POOLE
TOWNSEND**

Cliffe Lane, Barrow-in-Furness, Cumbria, LA14 4JD

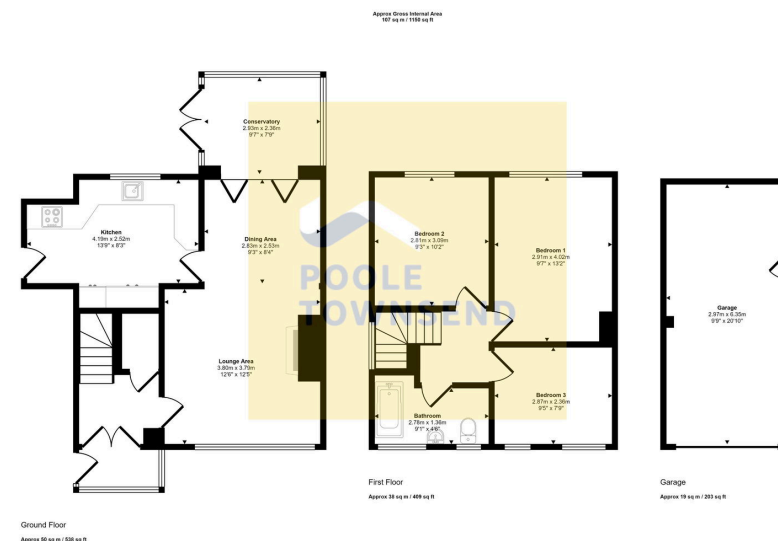
£315,000

3 1 2



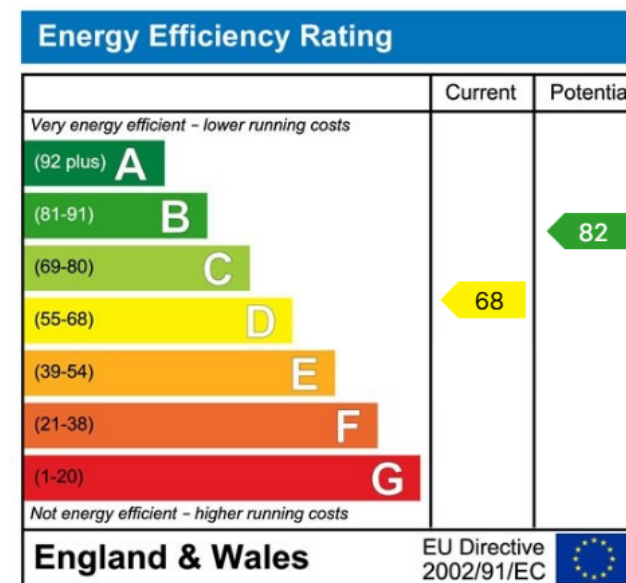
- NO CHAIN
- Stunning kitchen
- Three bedrooms
- Wrap around garden to the front and side
- Detached garage
- Open plan lounge/dining room
- Conservatory
- Modern 3-piece bathroom
- Enclosed patio style garden
- Immaculately presented family home





This floorplan is only for illustrative purposes and is not to scale. Measurements of rooms, doors, windows, and any items are approximate and no responsibility is taken for any error, omission or mis-statement. Icons of items such as bathroom suites are representations only and may not look like the real items. Made with Made Snappy 360.

NO CHAIN This is an immaculately presented family home, situated in a quieter location on the edge of Hawcoat and only a short walk to How Tun Woods. The corner plot includes a lawn covered garden the wraps around the front and side of the house leading to an enclosed patio style garden. The extended living accommodation includes an open plan lounge/dining room with bi-folding doors to the conservatory and further access to a stunning kitchen that is equipped with appliances. There are three great size bedrooms upstairs and a modern 3-piece bathroom with a dual head shower over the bath. There is a detached garage and driveway for 1 car.



Visit us at
www.pooletownsend.co.uk
enquiries@pooletownsend.co.uk

We are open
 Monday – Friday 9.00 – 5.00
 Saturday 9.00 – 1.00

Barrow 01229 811811
 Ulverston 01229 588111
 Grange 015395 33316
 Kendal 01539 734455
 Milnthorpe 015395 62044