



**POOLE  
TOWNSEND**



# Kingsdown Mews, Barrow In Furness, LA14 3BJ

£389,000

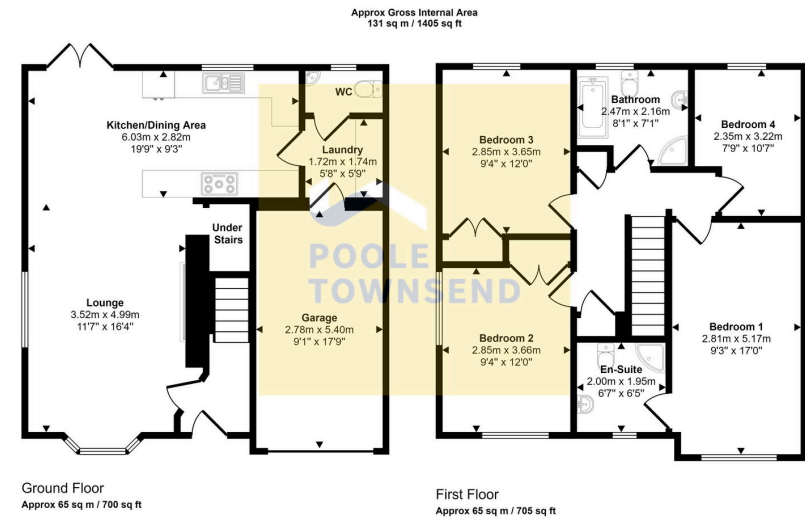
4 2 1





- Semi Detached Property
- 4 Bedrooms With Master En-Suite
- Downstairs WC and Utility Room
- Open Driveway To The Front & Integral Garage
- Popular Location
- Open Plan Lounge and Kitchen Diner
- Large Size Family Home Suite
- Bathroom With Four Piece Suite
- Large Rear Garden
- Council Tax Band - D





This floorplan is only for illustrative purposes and is not to scale. Measurements of rooms, doors, windows, and any items are approximate and no responsibility is taken for any error, omission or mis-statement. Icons of items such as bathroom suites are representations only and may not look like the real items. Made with Made Snappy 360.

This is a fabulous family home that is stylishly presented throughout, featuring a free-flowing open plan lounge and kitchen/diner with access to the garden and contemporary furnishing. Love how the property is presented right now? Many of the furnishing items and accessories can be available to purchase by separate negotiation. Beyond the living area is a laundry room and WC. There are 4 bedrooms, including 3 double rooms and a master bedroom with en-suite shower room. A 4-piece bathroom is accessible from the landing. An integral garage and a double width driveway should be ample for most buyers who can also enjoy the private family/pet friendly garden to the rear and the enclosed deck to the front of the house to enjoy the evening sun. Excellent EPC rating of band B.

Visit us at  
[www.pooletownsend.co.uk](http://www.pooletownsend.co.uk)  
[enquiries@pooletownsend.co.uk](mailto:enquiries@pooletownsend.co.uk)

We are open  
 Monday – Friday 9.00 – 5.00  
 Saturday 9.00 – 1.00

Barrow 01229 811811  
 Ulverston 01229 588111  
 Grange 015395 33316  
 Kendal 01539 734455  
 Milnthorpe 015395 62044