



**POOLE
TOWNSEND**

Tyne Road, Walney, Barrow-in-Furness, Cumbria, LA14 3NA

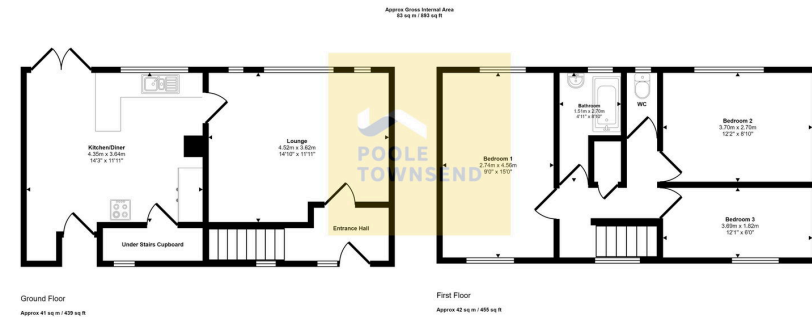
£170,000

3 1 1



- Mid-Terraced Home
- Kitchen Diner
- Spacious Lounge
- Three Bedrooms
- Family Bathroom
- Off Road Parking
- Rear Garden
- Double Glazing & Gas Central Heating
- FREEHOLD
- Council Tax Band - A





This floorplan is only for illustrative purposes and is not to scale. Measurements of rooms, doors, windows, and any items are approximate and no responsibility is taken for any error, omission or mis-statement. Icons of items such as bathroom suites are representations only and may not look like the real items. Made with Made Snappy 360.

NEW This family sized home is located in a popular part of Walney which is convenient for local amenities including bus service and schools. There is private off-road parking to the front with a dropped curb, landscaped rear garden with lawn and flagged patio plus a lovely backdrop to the rear with a view from the upper floor onto the rugby fields. The living accommodation comprises an entrance hall, lounge and dining kitchen with under stair cupboard, a first floor landing with loft access and boiler cupboard, three bedrooms, two-piece bathroom and a separate WC. There is a gas-fired central heating system and UPVC framed double glazing throughout.

Visit us at
www.pooletownsend.co.uk
enquiries@pooletownsend.co.uk

We are open
 Monday – Friday 9.00 – 5.00
 Saturday 9.00 – 1.00

Barrow 01229 811811
 Ulverston 01229 588111
 Grange 015395 33316
 Kendal 01539 734455
 Milnthorpe 015395 62044