



**POOLE
TOWNSEND**

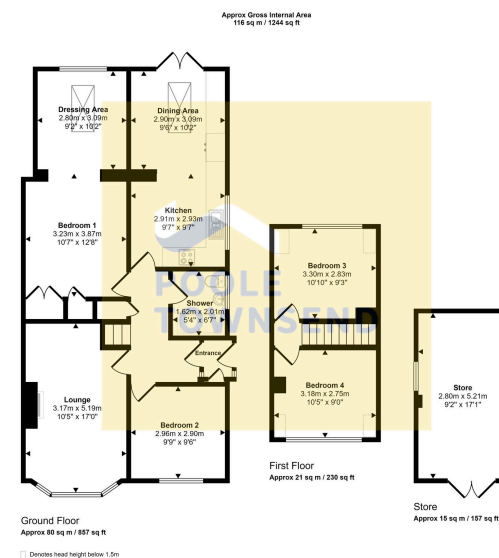
Kentmere Crescent, Barrow-in-Furness, LA14 4NL
£299,950

4 1 1

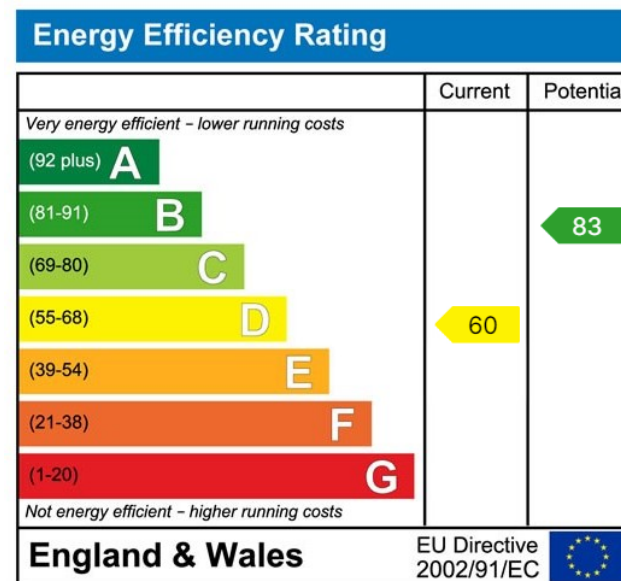


- Semi-Detached Dormer Bungalow
- Kitchen Diner
- Shower Room
- Large Outdoor Store
- Double Glazing & Gas Central Heating
- Lounge
- Four Bedrooms
- Rear Garden
- Off Road Parking
- Council Tax Band - C





This is a stunning home that will attract strong interest. The sought after location has several key amenities available including a regular bus services, Furness General Hospital, Barrow Golf Club, Dane Ghyll Community Primary School, 2 pubs, hair salon and a convenience store etc. The property has been beautifully updated and significantly extended which has benefitted the kitchen and one of the bedrooms by adding a dressing area. In brief, the accommodation comprises; family lounge, extended kitchen/dining room, two ground floor bedrooms, a shower room plus 2 first floor bedrooms within the converted loft space. There is an easy to manage garden to the rear, a garage sized store and plentiful parking for several cars.



Visit us at
www.pooletownsend.co.uk
enquiries@pooletownsend.co.uk

We are open
 Monday – Friday 9.00 – 5.00
 Saturday 9.00 – 1.00

Barrow 01229 811811
 Ulverston 01229 588111
 Grange 015395 33316
 Kendal 01539 734455
 Milnthorpe 015395 62044