



**POOLE  
TOWNSEND**



# Dalton Lane, Barrow-in-furness, LA14 4LB

£215,000

🛏️ 2 🪑 1 🚗 1

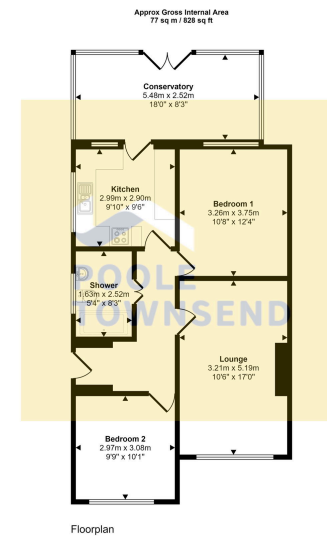




- Semi-detached bungalow
- Two double bedrooms
- Potential to extend into the loft space
- Double glazing throughout
- Garage sized structure for general storage
- Family size lounge
- A fitted kitchen
- Gas-fired central heating system
- Colourful garden to the front and rear
- No upper chain







The floorplan is only for illustrative purposes and is not to scale. Measurements of rooms, doors, windows, and any items are approximate and no responsibility is taken for any error, omission or mis-statement. Icons of items such as bathroom suites are representations only and may not look like the real items. Made with Made Gruppy 360.

**NEW PRICE** Located in the desirable residential area of Hawcoat, this semi-detached bungalow offers single-storey living that has been improved with the addition of conservatory that extends the full width of the property plus an upgraded shower room. The living accommodation also comprises a family size lounge that overlooks the front garden, two double bedrooms and also a fitted kitchen. There is potential to extend up into the loft space as many nearby homeowners have done. The property also features a gas-fired central heating system and double glazing throughout, colourful garden to the front and further garden to the rear that is prepared for growing fruit and vegetables. There is also a garage sized structure for general storage. No upper chain.

| Energy Efficiency Rating                    |                         |           |
|---|-------------------------|-----------|
|   | Current                 | Potential |
| Very energy efficient - lower running costs |                         |           |
| (92 plus) <b>A</b>                          |                         |           |
| (81-91) <b>B</b>                            |                         |           |
| (69-80) <b>C</b>                            |                         | 77        |
| (55-68) <b>D</b>                            | 57                      |           |
| (39-54) <b>E</b>                            |                         |           |
| (21-38) <b>F</b>                            |                         |           |
| (1-20) <b>G</b>                             |                         |           |
| Not energy efficient - higher running costs |                         |           |
| <b>England &amp; Wales</b>                  | EU Directive 2002/91/EC |           |

Visit us at  
[www.pooletownsend.co.uk](http://www.pooletownsend.co.uk)  
[enquiries@pooletownsend.co.uk](mailto:enquiries@pooletownsend.co.uk)

**We are open**  
 Monday – Friday 9.00 – 5.00  
 Saturday 9.00 – 1.00

Barrow 01229 811811  
 Ulverston 01229 588111  
 Grange 015395 33316  
 Kendal 01539 734455  
 Milnthorpe 015395 62044