



**POOLE
TOWNSEND**

Whinlatter Drive, Barrow-in-furness, LA14 4NR

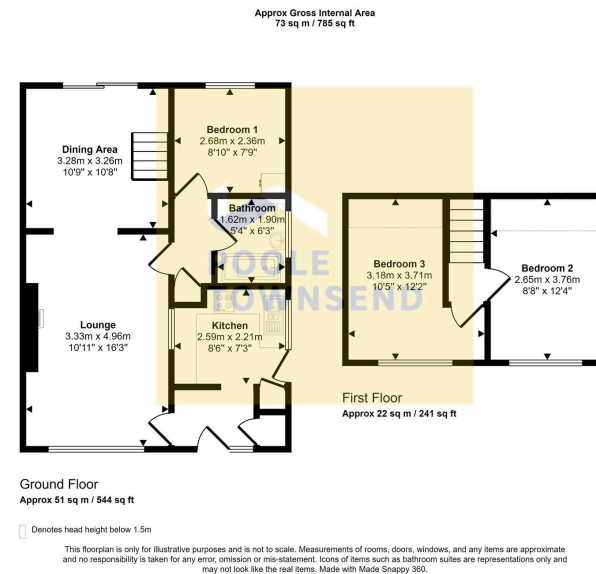
£245,000

3 1 1



- Situated in a popular area
- Semi-detached bungalow
- Extended accommodation
- Open plan lounge/diner
- Fitted kitchen and bathroom
- 3 bedrooms
- Converted loft
- Garden to the front and rear
- Driveway parking and a garage
- No upper chain



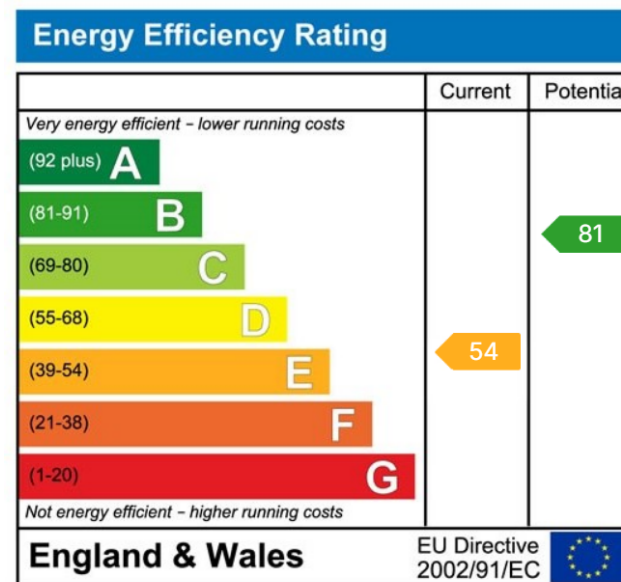


Step into your perfect home in the vibrant neighbourhood of Hawcoat!

This beautifully extended semi-detached bungalow combines modern comfort with timeless charm. The open-plan lounge and dining area create a welcoming space for relaxation and entertaining, while the sleek fitted kitchen is perfect for culinary adventures.

With three spacious bedrooms, including a stunning loft conversion, there's room for everyone to enjoy their own sanctuary. The property boasts lovely gardens at both the front and rear, ideal for outdoor gatherings or a peaceful retreat.

Convenience is key with driveway parking, a garage, and the benefit of gas central heating and double glazing. Best of all



Visit us at
www.pooletownsend.co.uk
enquiries@pooletownsend.co.uk

We are open
 Monday – Friday 9.00 – 5.00
 Saturday 9.00 – 1.00

Barrow 01229 811811
 Ulverston 01229 588111
 Grange 015395 33316
 Kendal 01539 734455
 Milnthorpe 015395 62044