



**POOLE
TOWNSEND**

Westmorland street, Barrow-In-Furness, LA14 5AR

£120,000

🛏️ 2 🚿 1 🚗 0



This terraced home is beautifully presented and offers modern and tastefully finished accommodation including a smart kitchen with laundry area and an equally impressive ground floor bathroom. The house will suit single buyer, couples or landlords looking for a buy to let investment. The accommodation also includes two double bedrooms to the first floor. There is a gas-fired central heating system, UPVC framed double glazing throughout and no upper chain.

Location

What3Words///swan.groom.ranks

Description

Situated in a popular area for younger buyers and investors, this terraced home offers ready to move into accommodation.

The lounge is a nice size room and naturally light with a central fireplace with power point alongside in readiness for an electric fire installed.

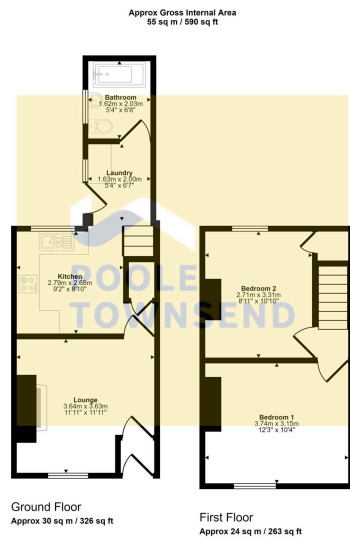
The adjacent kitchen offers a smart finish with cream décor panel doors to the fitted units which have a wood effect work surface with a coloured tiled to the walls behind. There is an integrated oven with halogen style hob and cooker hood, a single drainer sink with mixer tap and space for an upright fridge freezer.

There is open access to the adjacent laundry space where there is a further base cabinet with recess and plumbing for a washing machine. There is access into the yard from here, onto the stairwell and also into the ground floor bathroom.

The modern white suite has chrome coloured fittings including a shower attachment to the bath taps. There is a tile effect finish to the walls around the sanitary ware, an extractor fan and a window unit with opaque glass and opening pane giving further ventilation.

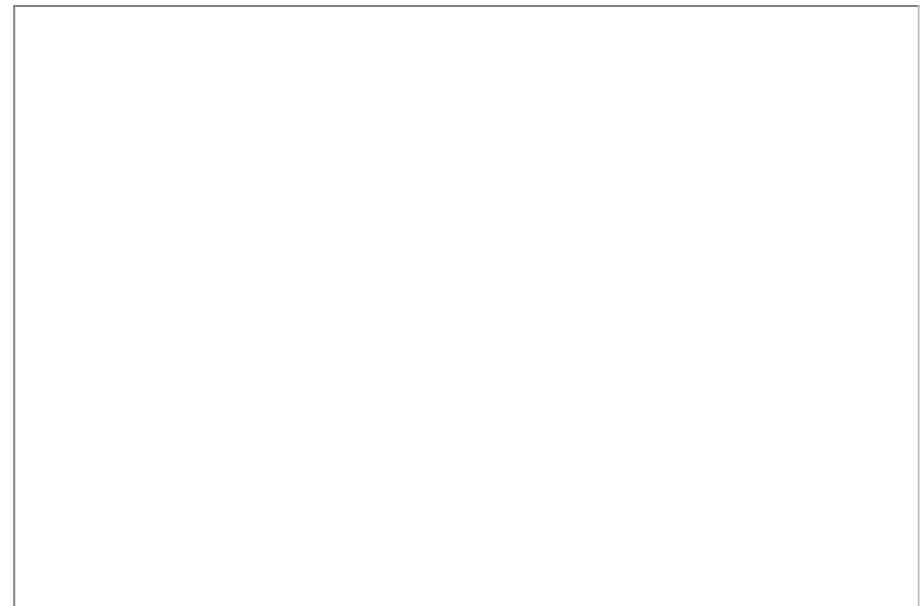
The landing area has a small loft hatch and doors to each of the two bedrooms which includes a double room at the front of the house and a smaller double bedroom to the rear that would make a perfect guest room. There is a cupboard to the alcove over the staircase





This floorplan is only for illustrative purposes and is not to scale. Measurements of rooms, doors, windows, and any items are approximate and no responsibility is taken for any error, omission or mis-statement. Icons of items such as bathroom suites are representations only and may not look like the real items. Made with Made Snappy 360.

- Modern finish
- Ground floor bathroom
- Suitable for multiple different buyers
- 2 double bedrooms
- Popular area
- Modern kitchen
- Close to local amenities
- UPVC framed windows
- Double Glazing
- NO UPPER CHAIN



Visit us at
www.pooletownsend.co.uk
enquiries@pooletownsend.co.uk

We are open
 Monday – Friday 9.00 – 5.00
 Saturday 9.00 – 1.00

Barrow 01229 811811
 Ulverston 01229 588111
 Grange 015395 33316
 Kendal 01539 734455
 Milnthorpe 015395 62044