



**POOLE
TOWNSEND**

Torver Row, Dalton-in-Furness, LA15 8SZ

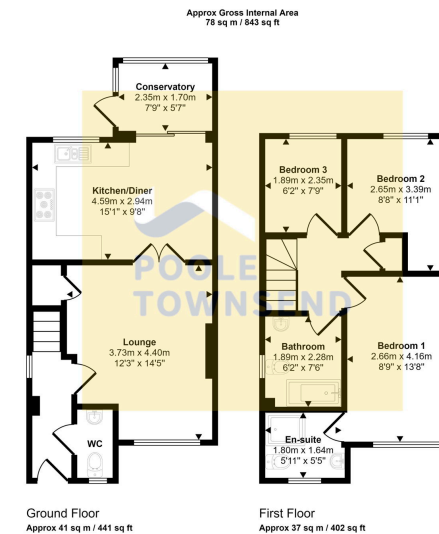
£199,000

🛏️ 3 🪑 2 🚗 1



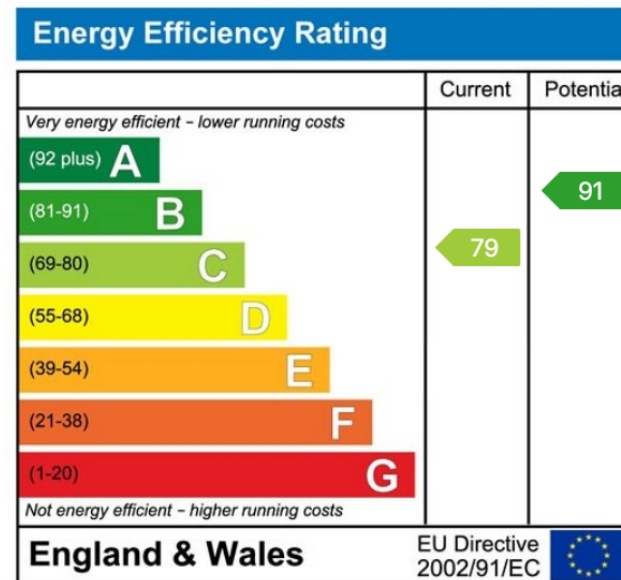
- Semi-detached home
- Nicely proportioned lounge
- Conservatory style extension
- WC/ cloakroom
- Three bedrooms
- En-suite shower room to the main bedroom
- Three piece bathroom suite
- Driveway parking
- UPVC framed double glazing.
- No upper chain
- Gas-fired central heating





This floorplan is only for illustrative purposes and is not to scale. Measurements of rooms, doors, windows, and any items are approximate and no responsibility is taken for any error, omission or mis-statement. Icons of items such as bathroom suites are representations only and may not look like the real items. Made with Made Snappy 360.

NEW Forming part of a small and established development, this semi-detached home provides accommodation that will suit a couple or family buyer. There is a nicely proportioned lounge with dining kitchen alongside and a conservatory style extension overlooking the garden. There is also a WC/cloakroom which is accessed from the hallway. The first floor offers three bedrooms with an en-suite shower room to the main bedroom and a three piece bathroom suite. There is driveway parking for two vehicles, UPVC framed double glazing and gas-fired central heating system, no upper chain and also a FTTP broadband (Fibre to the Premises).



Visit us at
www.pooletownsend.co.uk
enquiries@pooletownsend.co.uk

We are open
 Monday – Friday 9.00 – 5.00
 Saturday 9.00 – 1.00

Barrow 01229 811811
 Ulverston 01229 588111
 Grange 015395 33316
 Kendal 01539 734455
 Milnthorpe 015395 62044