



**POOLE
TOWNSEND**

Duncan Street, Barrow-in-furness, LA14 2NX

£50,000

🛏️ 2 🪑 1 🚗 1



Situated in the centre of town and just a short walk away from local amenities, this terraced home will appeal to a range of buyers, particularly those looking for a property that can be upgraded. The living accommodation offers an open plan arrangement with a central stairwell ascending to the first floor. There is a modern kitchen to the rear with access to the yard, two bedrooms and a modern shower room to the first floor plus a loft room which has an enclosed staircase accessed from the landing. The property has UPVC framed double glazing and no upper chain.

Location

What3Words///desire.boss.extend

Description

This terraced home requires further modernising and updating to complete the improvements that have already been made to the kitchen and shower rooms in particular and also the windows.

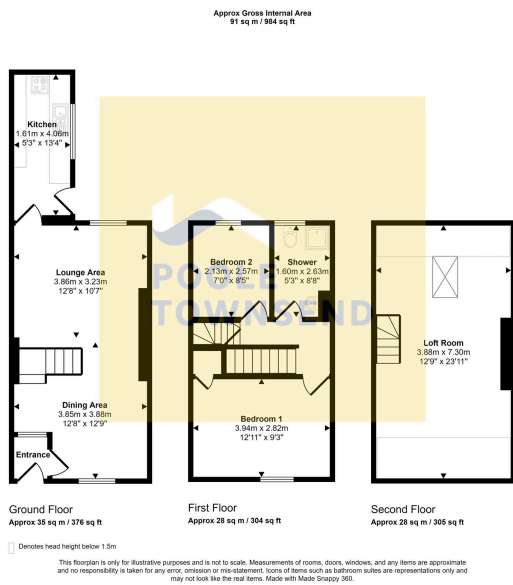
The vestibule area leads you directly into the open plan living room which runs the full depth of the property with an open tread stairwell to the centre that partially divides the room to create a dining space and lounge area. There is an open fronted gas fire and access to the kitchen.

The kitchen has been modernised and offers fitted base cabinets and drawers to both sides of the room and further cupboards to the wall opposite the window. There is a single drainer sink set within the worktop which has a single row of tiles creating a splash back. There is a gas point for a cooker where there is a wall mounted cooker hood above. The room also has plumbing for a washing machine and a door leading directly into the enclosed yard.

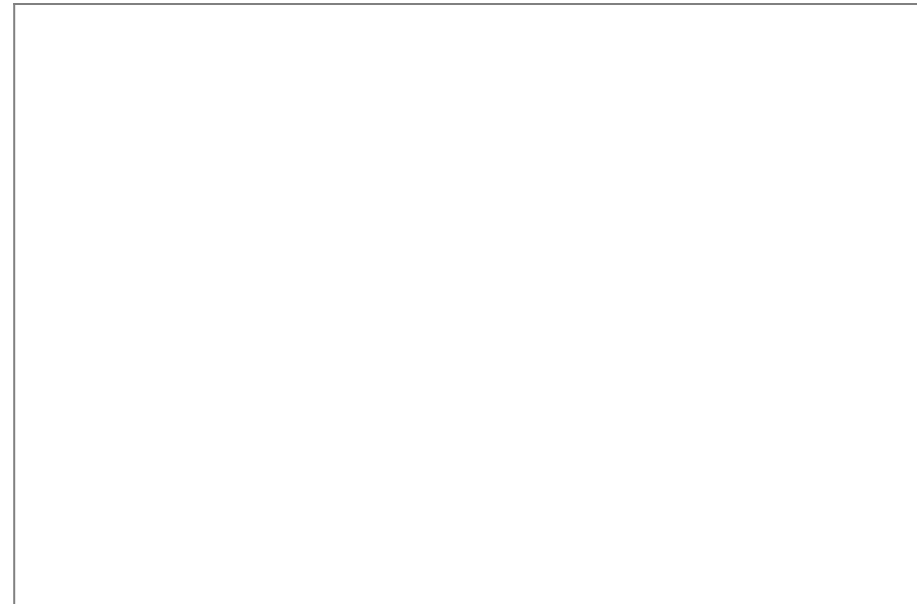
The landing has access to an enclosed staircase that leads into the loft room which has a vaulted ceiling throughout with a roof light to the rear elevation.

The first floor accommodation includes a double bedroom to the front of the house with a built-in cupboard over the staircase. There is also a single bedroom to the back of the house next to the nicely upgraded shower room which has a three-piece suite in white with





- Renovation Project
- Modern Shower Room
- Short Walk to Amenities
- No Upper Chain
- EPC TBC
- Ideal Investment/Rental Opportunity
- Town Centre Location
- UPVC Double Glazing
- Two Bedrooms
- Council Tax Band A



Visit us at
www.pooletownsend.co.uk
enquiries@pooletownsend.co.uk

We are open
 Monday – Friday 9.00 – 5.00
 Saturday 9.00 – 1.00

Barrow 01229 811811
 Ulverston 01229 588111
 Grange 015395 33316
 Kendal 01539 734455
 Milnthorpe 015395 62044