



**POOLE
TOWNSEND**

Pine Road, Barrow-In-Furness< LA14 5EL

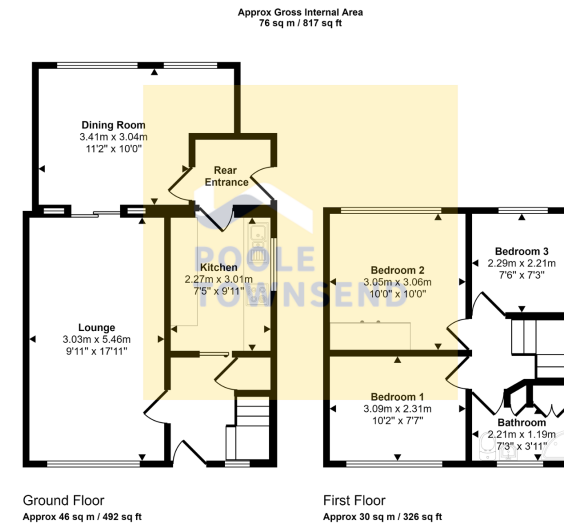
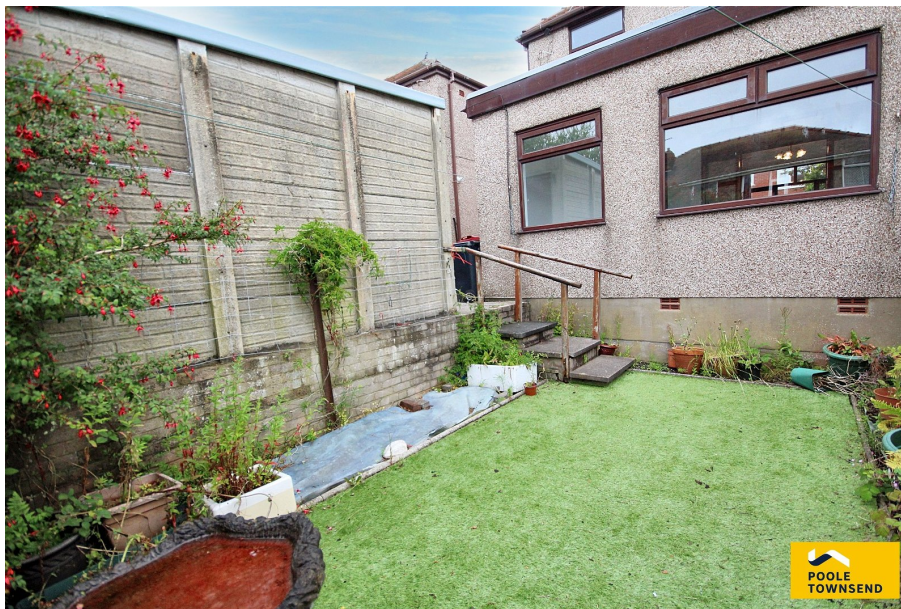
£145,000

3 1 2



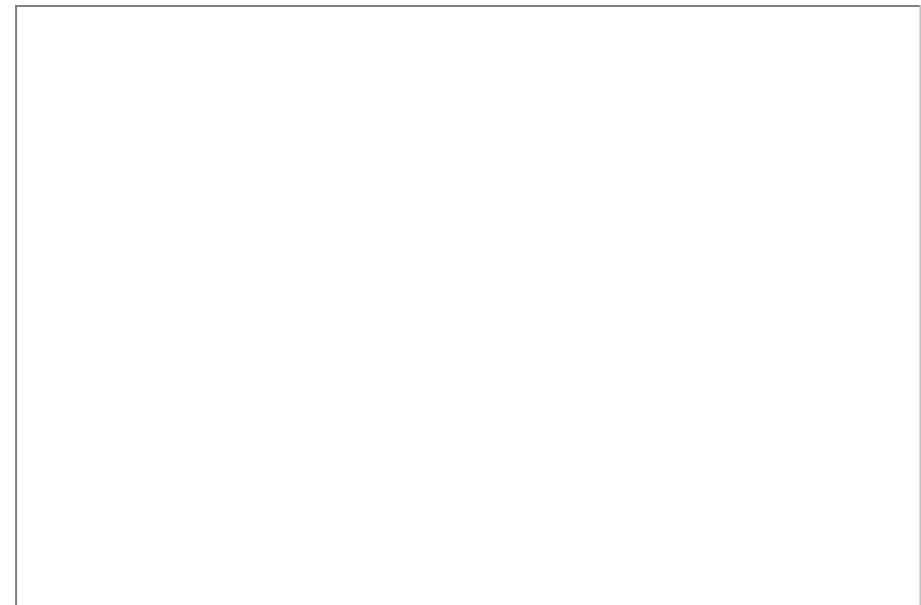
- Appeals to a lot of buyers
- Open plan living
- Separate kitchen
- 2 double bedrooms
- Enclosed garden to the front
- Garden and garage to the rear
- Gas fired central heating
- Double glazing throughout
- No upper chain
- Potential for further updating





This floorplan is only for illustrative purposes and is not to scale. Measurements of rooms, doors, windows, and any items are approximate and no responsibility is taken for any error, omission or mis-statement. Icons of items such as bathroom suites are representations only and may not look like the real items. Made with Made Snappy 360.

NEW This semi-detached home will appeal to first-time buyers and couples who can grow into this family sized home. The property offers open plan living accommodation with the lounge and dining room running the full depth of the house. There is a separate kitchen, three bedrooms including two double rooms and bathroom. There is an enclosed garden area to the front with further garden and garage to the rear. The property has a gas-fired central heating system and double glazing, no upper chain and lots of potential for further updating.



Visit us at
www.pooletownsend.co.uk
enquiries@pooletownsend.co.uk

We are open
 Monday – Friday 9.00 – 5.00
 Saturday 9.00 – 1.00

Barrow 01229 811811
 Ulverston 01229 588111
 Grange 015395 33316
 Kendal 01539 734455
 Milnthorpe 015395 62044