



**POOLE  
TOWNSEND**

# 52 King Alfred Street, Walney

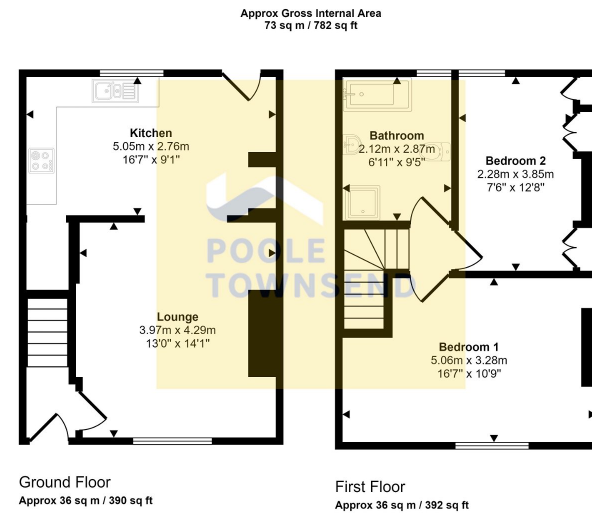
£130,000

🛏️ 2 🚿 1 🚻 1



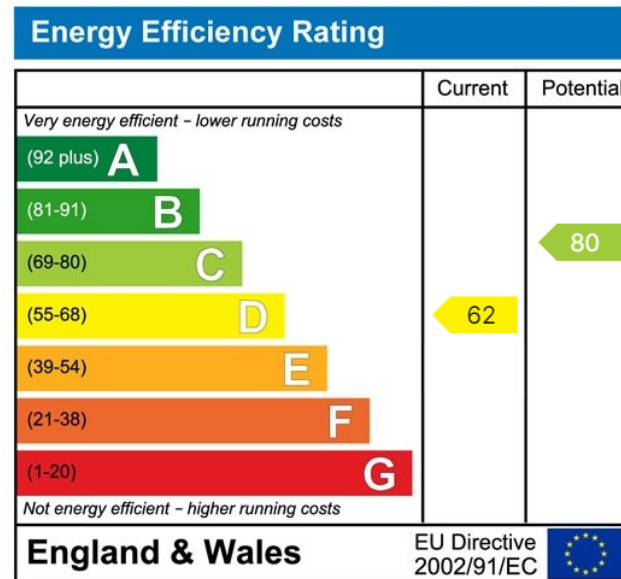
- Modern Fixtures & Fittings
- 4 Piece Bathroom Suite
- Naturally Light - Large Windows
- Good Size Yard
- EPC - D
- Open Plan Kitchen/Diner/Lounge
- Close to Local Amenities
- Tasteful Décor
- Outbuilding & Shed
- Council Tax Band - A





This floorplan is only for illustrative purposes and is not to scale. Measurements of rooms, doors, windows, and any items are approximate and no responsibility is taken for any error, omission or mis-statement. Icons of items such as bathroom suites are representations only and may not look like the real items. Made with Made Snappy 360.

This is a lovely home that offers beautifully presented accommodation, featuring a generously proportioned living space with open plan lounge and kitchen. There are two bedrooms including a spacious double bedroom at the front of the property and a 4-piece bathroom with an independent shower cubicle. The enclosed yard offers a decked area with artificial lawn area and outbuildings.



Visit us at  
[www.pooletownsend.co.uk](http://www.pooletownsend.co.uk)  
[enquiries@pooletownsend.co.uk](mailto:enquiries@pooletownsend.co.uk)

We are open  
 Monday – Friday 9.00 – 5.00  
 Saturday 9.00 – 1.00

Barrow 01229 811811  
 Ulverston 01229 588111  
 Grange 015395 33316  
 Kendal 01539 734455  
 Milnthorpe 015395 62044