



**POOLE  
TOWNSEND**

# School View, Cavendish Street, Dalton-In-Furness, LA15 8SP

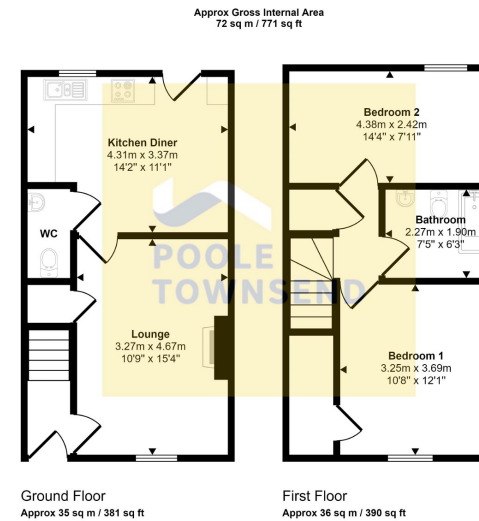
£128,000

2 1 1



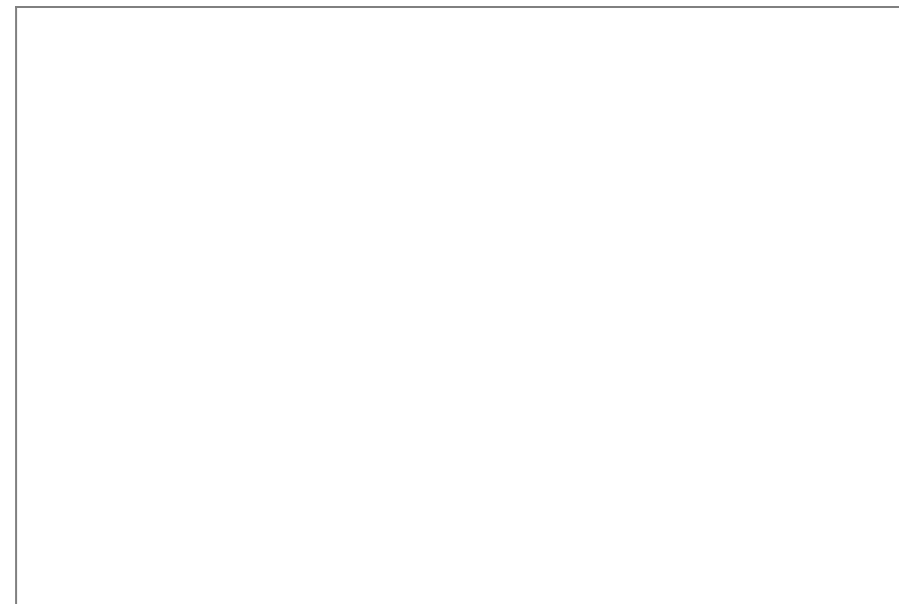
- Close to local amenities
- Ground floor WC
- 2 Bedrooms
- Privately enclosed yard
- Close to local schools
- Modern built
- Kitchen/dining room
- 3-Piece Bathroom
- No upper chain
- Council tax band A





This floorplan is only for illustrative purposes and is not to scale. Measurements of rooms, doors, windows, and any items are approximate and no responsibility is taken for any error, omission or mis-statement. Icons of items such as bathroom suites are representations only and may not look like the real items. Made with Made Snappy 360.

NEW-This modern built semi-detached home is located adjacent to Chapel Street Infant and Nursery School and only a short walk to the leisure centre and George Romney Junior School, ideal for a young family. The accommodation comprises; lounge, kitchen/dining room, GF WC, two bedrooms and a 3-piece bathroom. There is a private enclosed yard at the rear and no upper chain.



Visit us at  
[www.pooletownsend.co.uk](http://www.pooletownsend.co.uk)  
[enquiries@pooletownsend.co.uk](mailto:enquiries@pooletownsend.co.uk)

We are open  
 Monday – Friday 9.00 – 5.00  
 Saturday 9.00 – 1.00

Barrow 01229 811811  
 Ulverston 01229 588111  
 Grange 015395 33316  
 Kendal 01539 734455  
 Milnthorpe 015395 62044