



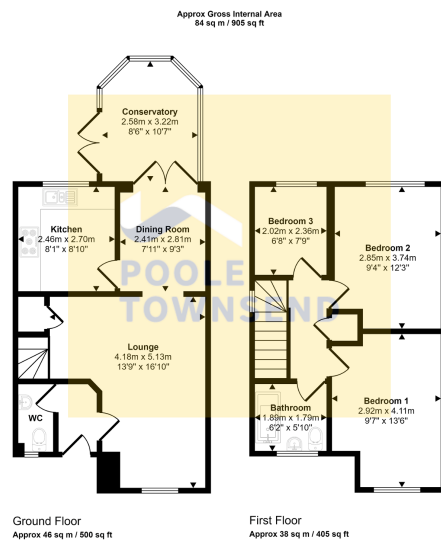
**POOLE
TOWNSEND**

Lichfield Close, Barrow-In-Furness, LA14 5LX

£249,950

3 2 1





This floorplan is only for illustrative purposes and is not to scale. Measurements of rooms, doors, windows, and any items are approximate and no responsibility is taken for any error, omission or mis-statement. Icons of items such as bathroom suites are representations only and may not look like the real items. Made with Magic Shippy 360.



This is a smartly presented modern home offers open plan living accommodation that has been extended with the addition of a conservatory to the rear. There is a fitted kitchen and ground floor WC, three bedrooms including two double rooms plus a bathroom. The property has mahogany style UPVC framed double glazing throughout, gas-fired central heating, plenty of parking for two vehicles plus garden to the front and rear. An ideal home in a popular location that is also close to amenities.



Visit us at
www.pooletownsend.co.uk
enquiries@pooletownsend.co.uk

We are open
 Monday – Friday 9.00 – 5.00
 Saturday 9.00 – 1.00

Barrow 01229 811811
 Ulverston 01229 588111
 Grange 015395 33316
 Kendal 01539 734455
 Milnthorpe 015395 62044