



**POOLE  
TOWNSEND**

# Rakesmoor Lane, Barrow-In-Furness, LA14 4LQ

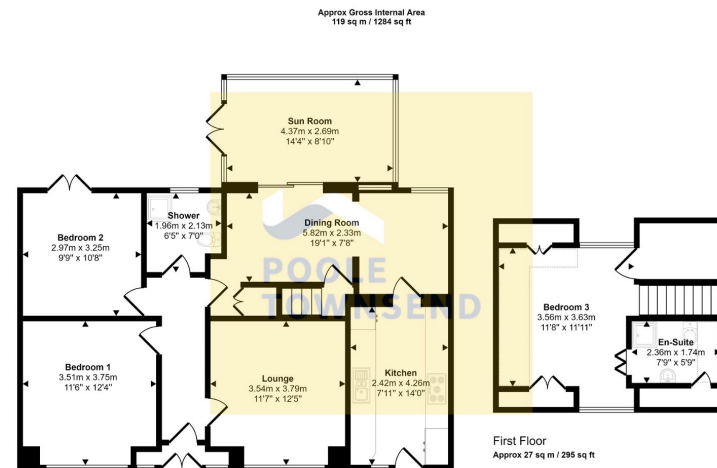
£335,000

🛏️ 3 🚿 2 🛋️ 2



- Wonderful property with versatile accommodation
- Converted loft space
- Large driveway
- Two reception rooms
- New clay tile roof
- Extended and improved
- Well presented throughout
- Triple glazed windows to the two rooms at the front and double glazing to all other rooms
- Three bedrooms and two bathrooms
- No upper chain



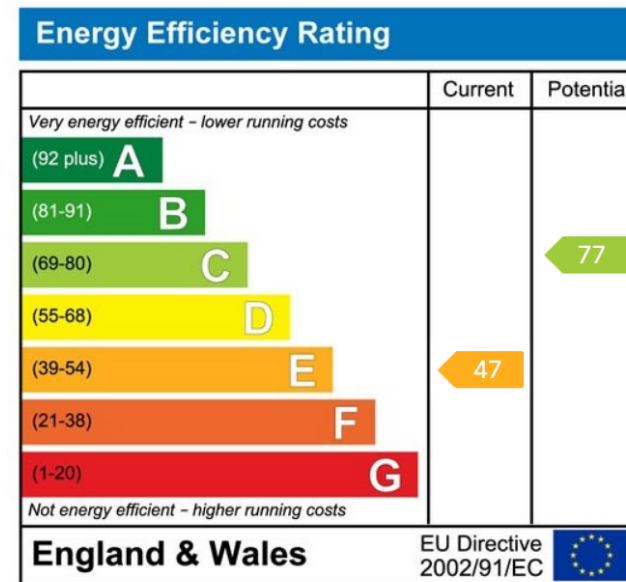


Ground Floor  
Approx 92 sq m / 990 sq ft

□ Denotes head height below 1.5m

This floorplan is only for illustrative purposes and is not to scale. Measurements of rooms, doors, windows, and any items are approximate and no responsibility is taken for any error, omission or mis-statement. Icons of items such as bathroom suites are representations only and may not look like the real items. Made with Made2Happy 360.

This is a wonderful property with versatile accommodation that has been extended and improved with a highly glazed sun room overlooking the garden, a converted loft that now provides a double bedroom with en-suite plus a converted garage space to create the new kitchen space. The property is well presented throughout and benefits from having a lovely sunny garden, a double entry/exit driveway and a complete new tile roof (May/ June 2024) and new fibreglass covering to flat roofs. The desirable location is home to many amenities including Barrow Golf Club, Furness General Hospital, bus services, pubs, hair salon, bakery and convenience store etc. The ground floor living space comprises; two reception rooms, sun room, kitchen, two bedrooms and a shower room. An enclosed staircase leads up to a double bedroom with open views to the front and rear and an en-suite shower room. No upper Chain.



Visit us at  
[www.pooletownsend.co.uk](http://www.pooletownsend.co.uk)  
[enquiries@pooletownsend.co.uk](mailto:enquiries@pooletownsend.co.uk)

We are open  
 Monday – Friday 9.00 – 5.00  
 Saturday 9.00 – 1.00

Barrow 01229 811811  
 Ulverston 01229 588111  
 Grange 015395 33316  
 Kendal 01539 734455  
 Milnthorpe 015395 62044