



**POOLE
TOWNSEND**

Dalton Lane, Barrow-in-furness, LA14 4LB

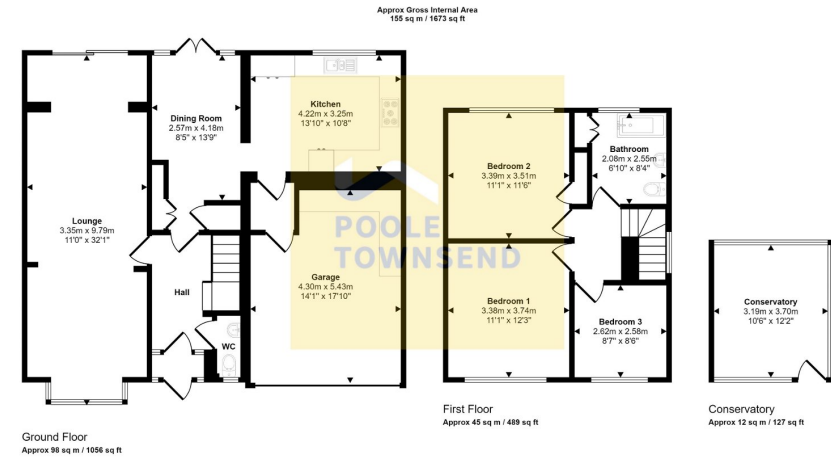
£335,000

3 1 2



- Detached family sized home
- Spacious and open plan living room
- Three bedrooms
- Gas-fired central heating system
- Colourful garden to the front and rear
- Immaculately presented accommodation
- Two-piece cloakroom/WC
- Smartly presented bathroom
- Double glazing
- Driveway parking and rear





This floorplan is only for illustrative purposes and is not to scale. Measurements of rooms, doors, windows, and any items are approximate and no responsibility is taken for any error, omission or misstatement. Some of items such as bathroom suites are representations only and may not look like the real items. Made with Made Snappy 360.

NEW This detached family sized home offers immaculately presented accommodation that has been greatly improved through modernising and also extending. Located in one of the towns most desirable locations, this property features a spacious and open plan living room that overlooks the front garden and also has direct access to the rear garden. There is a separate dining room that has been created from the original kitchen where there is now an opening through to the new kitchen area and to the attached garage. There is a two-piece cloakroom/WC just off the hallway where there are stairs leading up to the landing which provides space for a small desk and access to each of the three bedrooms and a smartly presented bathroom. The property has a gas-fired central heating system and double glazing, colourful garden to the front and rear, driveway parking, a detached conservatory within the

Visit us at
www.pooletownsend.co.uk
enquiries@pooletownsend.co.uk

We are open
 Monday – Friday 9.00 – 5.00
 Saturday 9.00 – 1.00

Barrow 01229 811811
 Ulverston 01229 588111
 Grange 015395 33316
 Kendal 01539 734455
 Milnthorpe 015395 62044