



**POOLE  
TOWNSEND**



# Braunton Drive, Barrow-in-furness, LA14 4JE

£285,000

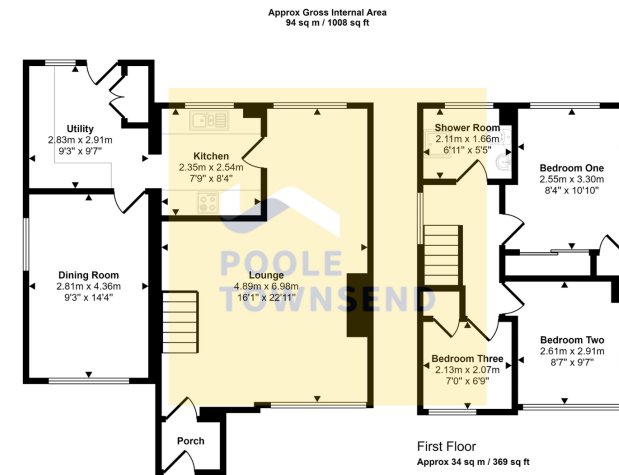
3 1 2





- Large corner plot
- Detached family home
- Sympathetically extended on the ground floor
- Two generous size reception rooms
- Utility room
- Three bedrooms and a shower room
- Surrounded by large gardens
- Parking with a detached garage
- No upper chain
- Council tax band C





Ground Floor  
Approx 59 sq m / 640 sq ft

This floorplan is only for illustrative purposes and is not to scale. Measurements of rooms, doors, windows, and any items are approximate and no responsibility is taken for any error, omission or mis-statement. Icons of items such as bathroom suites are representations only and may not look like the real items. Made with Made Snappy 360.

NEW Positioned on a large corner plot at the head of a quiet cul-de-sac, is this detached family home. Sympathetically extended on the ground floor, the property includes two generous sized reception room, a kitchen, utility, three bedrooms and a shower room. Surrounded by large gardens, ample parking and a detached garage, this property provides a fantastic opportunity for buyers to update and personalise, or even extend, subject to the relevant planning consents. No Chain.

Visit us at  
[www.pooletownsend.co.uk](http://www.pooletownsend.co.uk)  
[enquiries@pooletownsend.co.uk](mailto:enquiries@pooletownsend.co.uk)

We are open  
 Monday – Friday 9.00 – 5.00  
 Saturday 9.00 – 1.00

Barrow 01229 811811  
 Ulverston 01229 588111  
 Grange 015395 33316  
 Kendal 01539 734455  
 Milnthorpe 015395 62044