



**POOLE
TOWNSEND**

Baldwin Street, Barrow-In-Furness, LA14 4HP

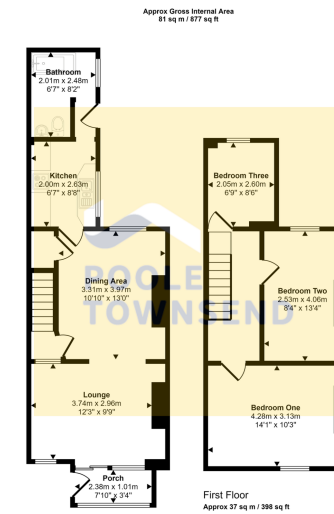
£130,000

3 1 2



- Quiet Residential Location
- Perfect Opportunity To Personalise
- Rear Private Yard
- Two Reception Rooms
- 3 Bedrooms
- Victorian Mid-Terrace
- Open Plan Living
- No Upper Chain
- Council Tax Band B
- Virtual Tour Available





Ground Floor
Approx 44 sq m / 479 sq ft

This floorplan is only for illustrative purposes and is not to scale. Measurements of rooms, doors, windows, and any items are approximate and no responsibility is taken for any error, omission or mis-statement. Sizes of items such as bathroom suites are representations only and may not look like the real items. Made with MakeSnappy 360.

NEW Located in a quiet cul-de-sac within the popular Hawcoat area of Barrow, is this deceptively spacious three bedroom Victorian terrace. Requiring modernisation and updating throughout, this property offers buyers the perfect opportunity to personalise to own tastes or even extend, subject to relevant planning consents. Offered with no upper chain, this property must be viewed to be appreciated.



Visit us at
www.pooletownsend.co.uk
enquiries@pooletownsend.co.uk

We are open
 Monday – Friday 9.00 – 5.00
 Saturday 9.00 – 1.00

Barrow 01229 811811
 Ulverston 01229 588111
 Grange 015395 33316
 Kendal 01539 734455
 Milnthorpe 015395 62044