



**POOLE
TOWNSEND**

Braunton Drive, Barrow-in-Furness, LA14 4JE

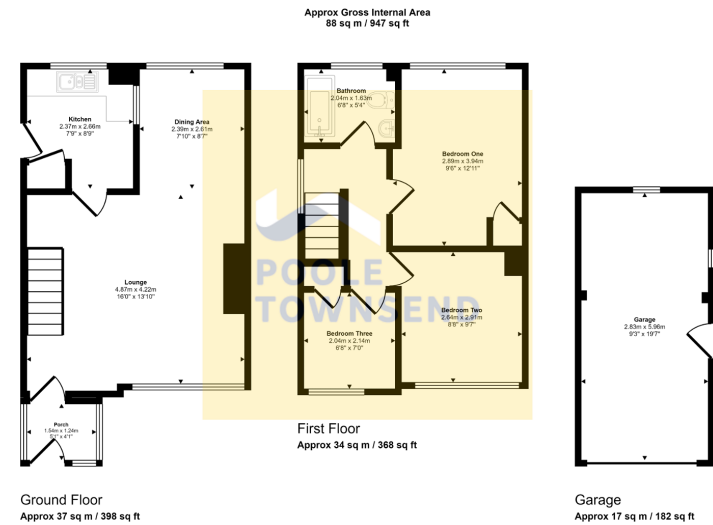
£235,000

3 1 1



- Detached Family Home
- Popular Location
- In Need Of Modernisation/ Renovation
- NO CHAIN
- Front & Rear Garden
- Off Road Parking
- Garage
- Double Glazed
- Gas Central Heating
- Council Tax Band - C





This floorplan is only for illustrative purposes and is not to scale. Measurements of rooms, doors, windows, and any items are approximate and no responsibility is taken for any error, omission or mis-statement. Icons of items such as bathroom suites are representations only and may not look like the real items. Made with Made Snappy 360.

REDUCED* Situated within the popular Hawcoat area of Barrow is this detached family home. Requiring modernisation and upgrading throughout, this property provides an open plan lounge/diner and kitchen to the ground floor and three bedrooms and bathroom upstairs, as well as ample driveway parking, a garage and low maintenance gardens. Offered with no upper chain, this property presents a fantastic opportunity to personalise to own tastes or even extend, subject to relevant planning consents.

Visit us at
www.pooletownsend.co.uk
enquiries@pooletownsend.co.uk

We are open
 Monday – Friday 9.00 – 5.00
 Saturday 9.00 – 1.00

Barrow 01229 811811
 Ulverston 01229 588111
 Grange 015395 33316
 Kendal 01539 734455
 Milnthorpe 015395 62044