



**POOLE  
TOWNSEND**



# Lyndale Avenue, Barrow-In-Furness, LA13 9AR

£299,950

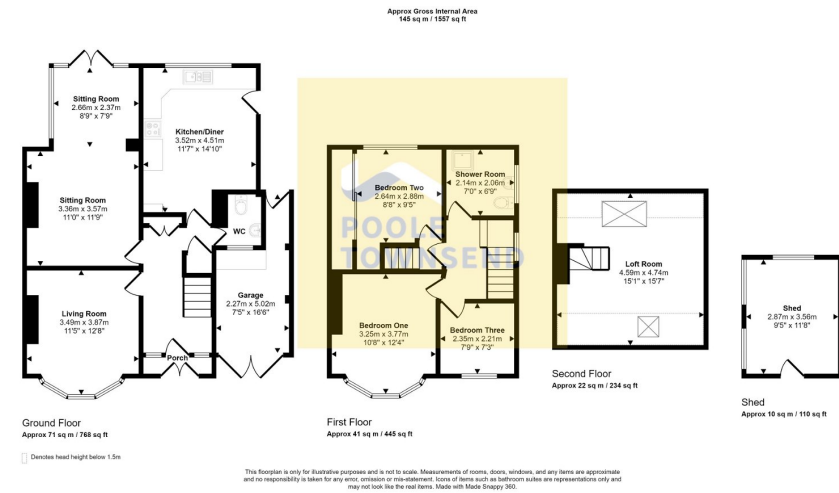
3 1 2





- Exceptional family home
- Ground floor extension
- Three bedrooms
- Conversion within the loft for office/craft space
- A garage and a large shed for storage
- Positioned on a large plot
- Stylish dining kitchen and spacious sitting room
- A shower room
- Large lawn and patio garden





NEW This exceptional family home offers more than meets the eye. Positioned on a large plot of well-manicured gardens and parking for two cars, the ground floor has been superbly extended to create a stylish dining kitchen and spacious sitting room, which sits alongside the bay window lounge and cloakroom. The first floor retains the original, nicely appointed layout with three bedrooms and a shower room and a conversion within the loft has created a bright office/crafts room. The large lawn and patio gardens are a triumph and there is even a garage store and large shed for storage.

Visit us at  
[www.pooletownsend.co.uk](http://www.pooletownsend.co.uk)  
[enquiries@pooletownsend.co.uk](mailto:enquiries@pooletownsend.co.uk)

We are open  
 Monday – Friday 9.00 – 5.00  
 Saturday 9.00 – 1.00

Barrow 01229 811811  
 Ulverston 01229 588111  
 Grange 015395 33316  
 Kendal 01539 734455  
 Milnthorpe 015395 62044