



**POOLE  
TOWNSEND**

# Cypress Walk, Barrow-In-Furness, LA13 0JY

£295,000

4 2 2



This is a lovely family home, offering stylish and tasteful decor throughout and significantly extended accommodation that includes a master bedroom with en-suite bathroom, a laundry room and a conservatory that has direct access into the rear garden. The living space is mainly open plan, offering clearly defined areas including a lounge, dining space, kitchen and second reception room. In addition to the master bedroom, there are two further double bedrooms, one of which has a walk-in dressing room. The dressing room was originally a single bedroom, so could be reinstated if a fourth bedroom is needed. The residual garage space is ideal for general storage of bikes, garden equipment etc. The double width driveway can comfortably fit two larger sized cars.

## Location

what3words///wipes.pads.jumped

## Description

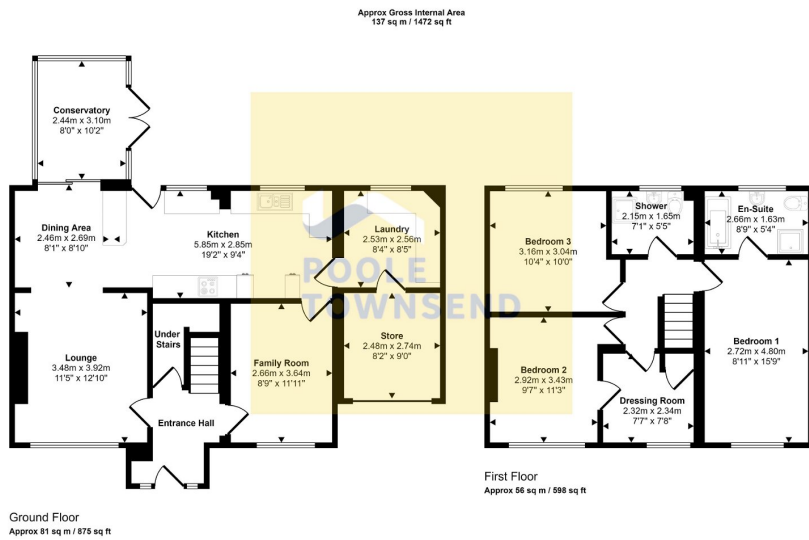
Situated in a desirable residential location, this family sized property is conveniently located for access to Yarlside Academy, bus services, Fish & Chip shop, a convenience store and two pubs.

The accommodation has been significantly extended, creating a two-storey side extension, a laundry room to the rear part of the garage plus a conservatory.

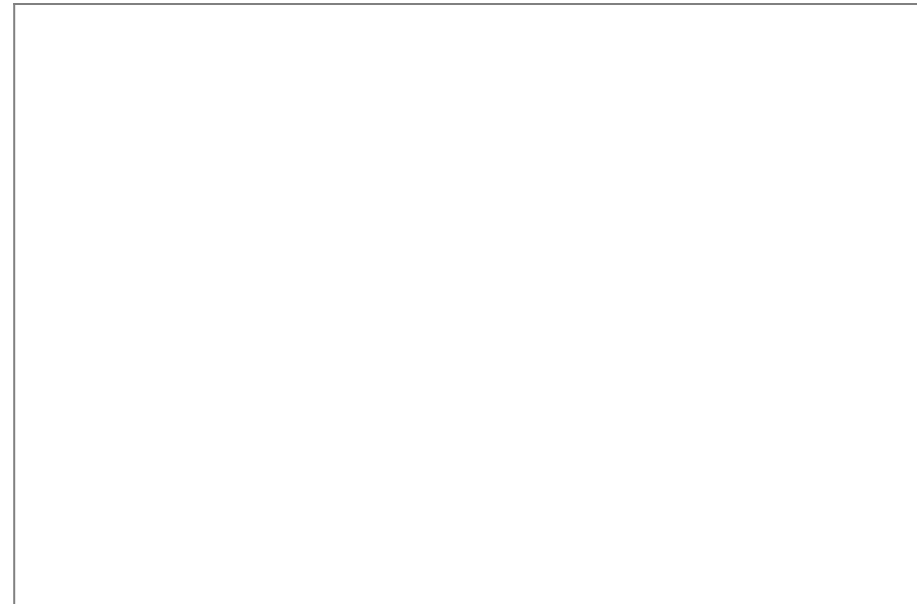
The central hall has a large walk-in cupboard below the stairs and doors to the family room and lounge. The lounge has an eye catching decor with feature paper to the fireplace wall. The family room could be utilised as a children's play room or TV room.

The dining area and kitchen run across the back of the property with a view into the garden and access into the conservatory. The fitted units have integrated finger tip style handles creating a more streamlined finish to the kitchen. The panelled doors have a grey colour with gloss finish and a contrasting coloured work surface above. There is an integrated double oven/grill, hob with splash back and cooker hood above, an integrated dishwasher and space for an American size fridge/freezer.





- Stunning Family Home
- Extended Accommodation
- En Suite Off Master
- Open Plan Living
- 3 Double & 1 Single Bedrooms (used as walk-in wardrobe)
- Rear Garden
- Double Width Driveway
- Desirable Residential Location
- Kitchen Diner & Utility Room
- Residual Garage



Visit us at  
[www.pooletownsend.co.uk](http://www.pooletownsend.co.uk)  
[enquiries@pooletownsend.co.uk](mailto:enquiries@pooletownsend.co.uk)

We are open  
 Monday – Friday 9.00 – 5.00  
 Saturday 9.00 – 1.00

Barrow 01229 811811  
 Ulverston 01229 588111  
 Grange 015395 33316  
 Kendal 01539 734455  
 Milnthorpe 015395 62044