



**POOLE
TOWNSEND**

Lesh Lane, Barrow-In-Furness, LA13 9ED

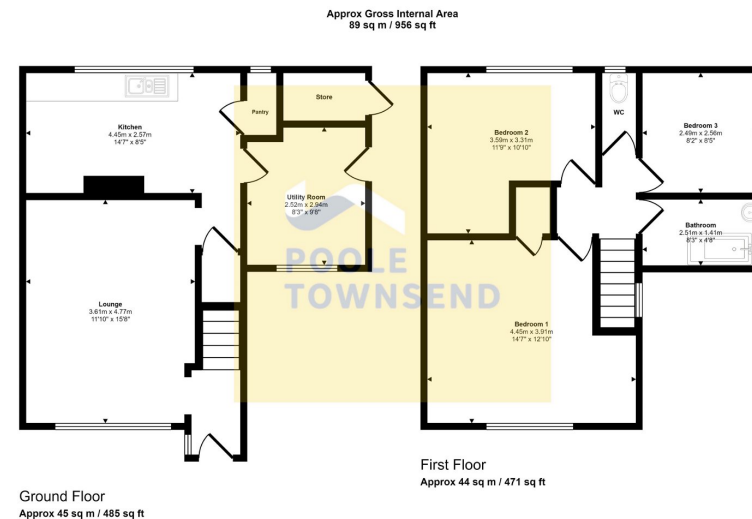
£100,000

3 1 1



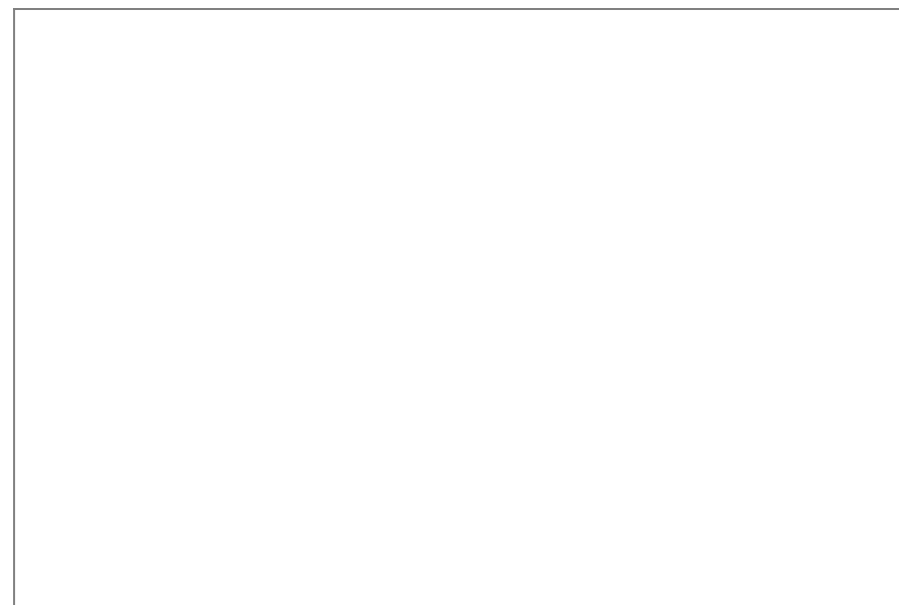
- Investing opportunity
- Garden wrapping around the property
- Make it you own style
- Utility room
- 2 Piece bathroom
- Generous sized polt
- Requires complete modernisation
- Nice sized lounge
- Separate WC
- No upper chain





This floorplan is only for illustrative purposes and is not to scale. Measurements of rooms, doors, windows, and any items are approximate and no responsibility is taken for any error, omission or mis-statement. Icons of items such as bathroom suites are representations only and may not look like the real items. Made with Macie Snappy 360.

*****NEW***** An interesting opportunity for cash buyers/investors. This family home is set on a generous size plot with garden wrapping around the three sides of the house. The property requires complete modernisation and presents you with the opportunity to upgrade to your own style and taste. There is a nice size lounge, a kitchen, utility room, three bedrooms, separate WC and a 2-piece bathroom. No upper chain.



Visit us at
www.pooletownsend.co.uk
enquiries@pooletownsend.co.uk

We are open
 Monday – Friday 9.00 – 5.00
 Saturday 9.00 – 1.00

Barrow 01229 811811
 Ulverston 01229 588111
 Grange 015395 33316
 Kendal 01539 734455
 Milnthorpe 015395 62044