



**POOLE
TOWNSEND**

Aspen Drive, Barrow-in-furness, LA13 0RL

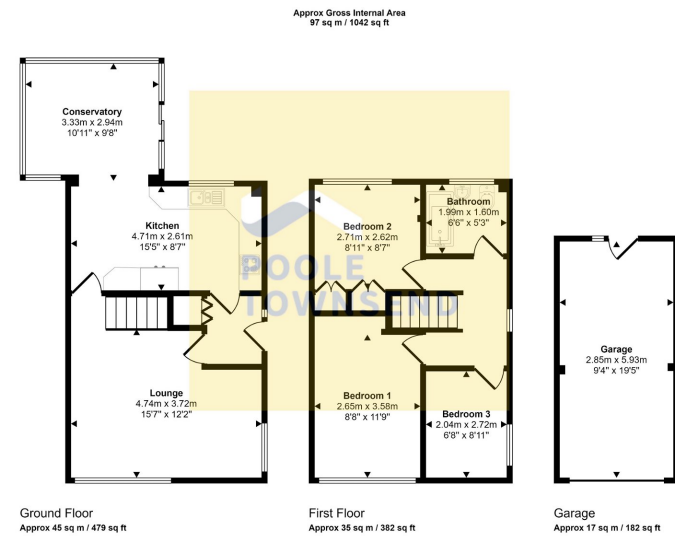
£260,000

3 1 1



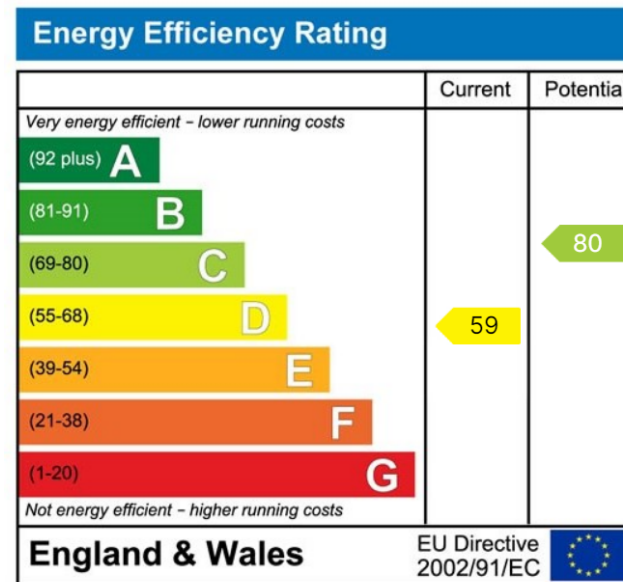
- Detached family sized home
- Substantial plot with extensive areas of lawn
- Driveway parking leading to a garage car port
- Extended property with a conservatory
- Dual aspect lounge
- Modern fitted kitchen
- 3 bedrooms and a 3-piece bathroom
- Gas central heating system, double glazing
- Popular location in Holbeck
- Front and rear garden





This floorplan is only for illustrative purposes and is not to scale. Measurements of rooms, doors, windows, and any items are approximate and no responsibility is taken for any error, omission or mis-statement. Icons of items such as bathroom suites are representations only and may not look like the real items. Made with Made Snaggy 360.

NEW This detached family sized home is set on a substantial plot with extensive areas of lawn, patio and private driveway parking leading to a garage and car port. The property has been extended with the addition of a conservatory that overlooks the rear garden. There is a dual aspect lounge, a modern fitted kitchen, 3 bedrooms and a 3-piece bathroom. There is also a gas central heating system and double glazing throughout. This is a popular location in Holbeck with the cul-de-sac of Aspen Drive only being a few minutes away from the local bus route and Yarlside Academy.



Visit us at
www.pooletownsend.co.uk
enquiries@pooletownsend.co.uk

We are open
 Monday – Friday 9.00 – 5.00
 Saturday 9.00 – 1.00

Barrow 01229 811811
 Ulverston 01229 588111
 Grange 015395 33316
 Kendal 01539 734455
 Milnthorpe 015395 62044