



**POOLE
TOWNSEND**

Kestrel Drive, Dalton-In-Furness, LA15 8QA

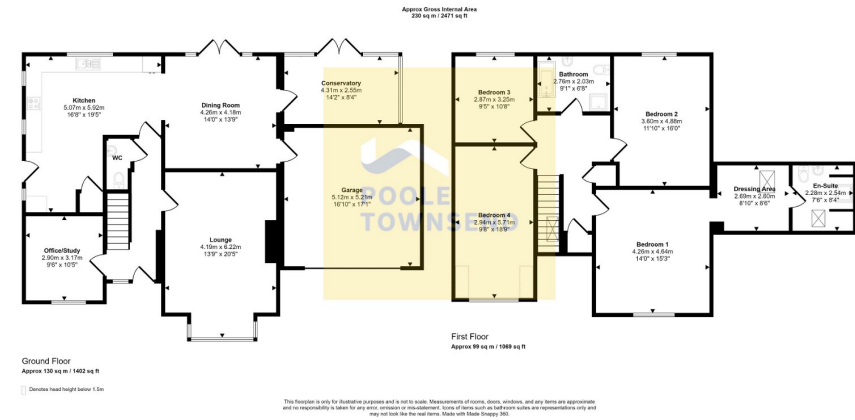
£550,000

🛏️ 4 🚿 2 🚗 2

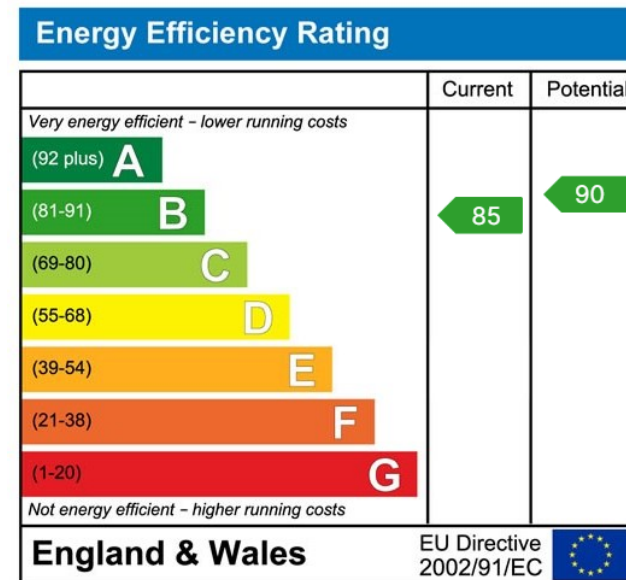


- Stunning Family Home
- Extensive Off Road Parking
- 4 Piece Family Bathroom
- Desirable Residential Location
- Mature Sunny Gardens
- Open Plan Kitchen Diner
- Versatile Living Accommodation
- 4 Double Bedrooms
- Integral Garage
- Gas, Central Heating





NEW This is a stunning property that is immaculately presented, offering spacious accommodation and fabulous, sunny gardens with mature trees. Updated from the builders original finish/ specification, this property would make an ideal family home. The versatile living accommodation includes a lounge with solid fuel stove, an office/snug, a GF WC, an open plan kitchen with a contemporary finish and open laundry space. There is also a dining room with double doors opening into the garden and access into the conservatory. The first floor comprises; four double bedrooms including the master bedroom which has a dressing area and en-suite shower room. The family bathroom is finished with a four piece suite. This modern home has extensive parking with turning space, integral garage with an electric roller shutter door, double glazing and gas-fired central heating.



Visit us at
www.pooletownsend.co.uk
 enquiries@pooletownsend.co.uk

We are open
 Monday – Friday 9.00 – 5.00
 Saturday 9.00 – 1.00

Barrow 01229 811811
 Ulverston 01229 588111
 Grange 015395 33316
 Kendal 01539 734455
 Milnthorpe 015395 62044