



**POOLE
TOWNSEND**

Goldsmith Street, Barrow-in-Furness, LA14 5RJ

£55,000

🛏️ 2 🪑 1 🚗 2



This extended terrace will be a 'stand out' property for any investor/ speculator. The accommodation is generous in size, including 2 reception rooms, a kitchen, ground floor WC, 2 double bedrooms and a bathroom (accessed via bedroom 2). The property does require thorough modernisation and will typically suit cash buyers. There are plenty of amenities and services close by, including transport (bus service and railway station), pharmacy, gym and schools. No upper chain.

Location

what3words///wheels.wonderfully.driver

Description

The living accommodation is divided by a central staircase, including a cosy dining room at the front of the house and a much more spacious lounge alongside. There is an internal window below the staircase, letting light transfer between the two rooms.

The kitchen is a single step down from the lounge, offering lots of scope to design and installed a modern range of units and appliances. There is a gas point for a cooker, plumbing for a washing and space for a freestanding fridge/freezer.

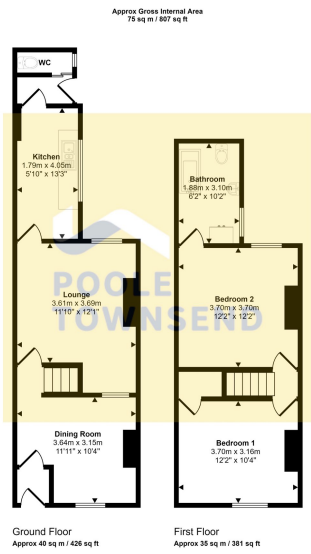
Beyond the kitchen and in to the hallway, there is an external door leading you into an enclosed yard and also a sliding door accessing a WC.

The landing area at the top of the stairs has stepped access into the two double bedrooms. The front room has a built-in cupboard above the staircase that also conceals the loft hatch. The second bedroom has stepped access into the bathroom which has a coloured suite including a panelled bath, WC and pedestal hand basin. The fitted cupboard alongside the window offers storage and also houses the hot water cylinder with immersion.

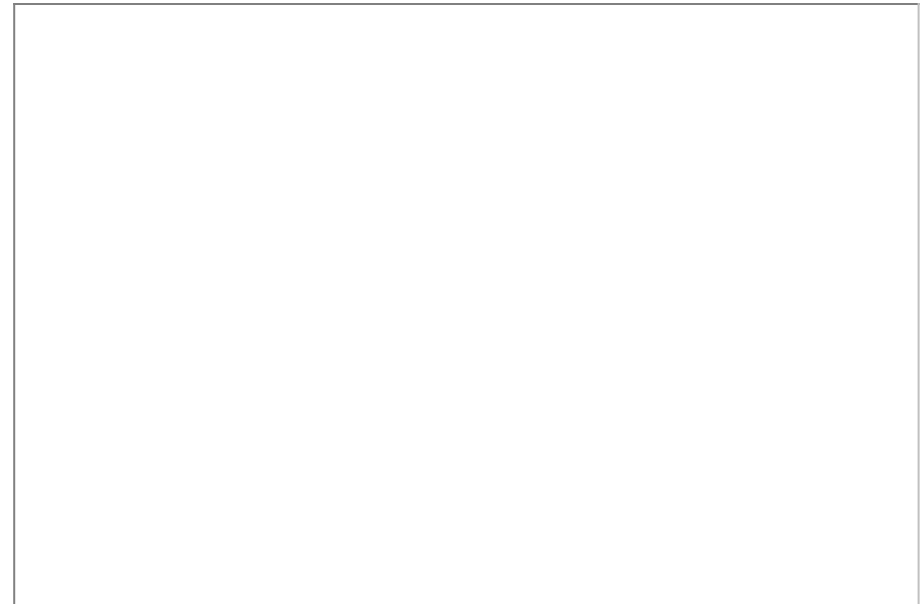
Tenure

Freehold.





This floorplan is only for illustrative purposes and is not to scale. Measurements of rooms, doors, windows, and any items are approximate and no responsibility is taken for any errors, omissions or misstatements. Icons of items such as bathroom scales are representations only and may not look like the real items. Made with Made Easy 995.



Visit us at
www.pooletownsend.co.uk
enquiries@pooletownsend.co.uk

We are open
 Monday – Friday 9.00 – 5.00
 Saturday 9.00 – 1.00

Barrow 01229 811811
 Ulverston 01229 588111
 Grange 015395 33316
 Kendal 01539 734455
 Milnthorpe 015395 62044