



**POOLE  
TOWNSEND**



# Bay View Grove, Barrow-in-furness, LA13 0EQ

£176,000

3 1 1

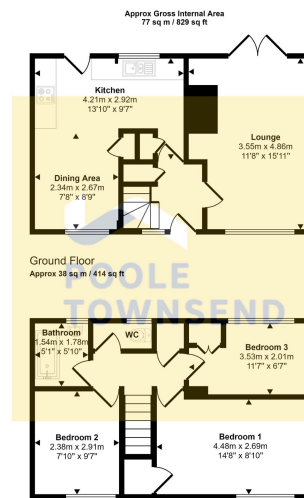




- Family property
- Excellent garden space
- Double doors opening into the garden
- Three bedrooms
- Gas - fired central heating system
- Located in a popular residential area
- Central hall leading to the lounge
- Open plan dining kitchen
- Double glazed throughout
- Modern glow - worm boiler







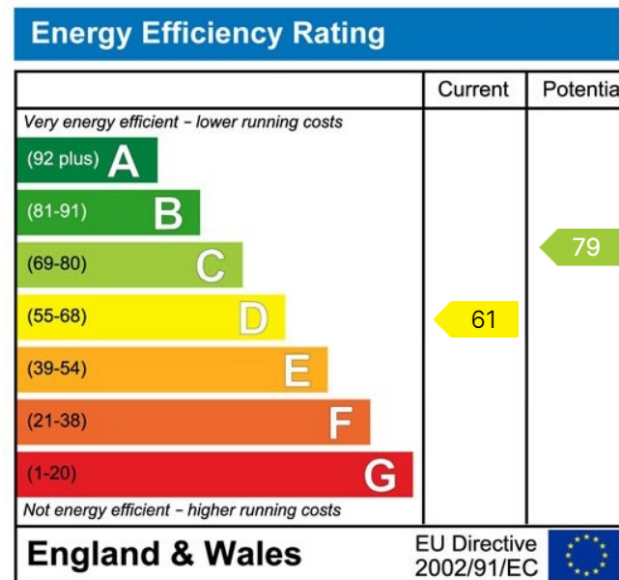
Approx Gross Internal Area  
77 sq m / 829 sq ft

Ground Floor  
Approx 38 sq m / 414 sq ft

First Floor  
Approx 39 sq m / 415 sq ft

The floorplan is only for illustrative purposes and is not to scale. Measurements of rooms, doors, windows, and any items are approximate and no responsibility is taken for any error, omission or mis-statement. Icons of items such as bathroom suites are representations only and may not look like the real items. Made with Made Snappy 300.

**NEW PRICE** This family property is located in a popular residential area, offering excellent garden space to relax plus modern and tastefully decorated accommodation. The central hall leads through to the lounge where there are double doors opening into the garden, there is an open plan dining kitchen modern fitted units and appliances, three bedrooms, bathroom and separate WC. The property is double glazed throughout and also has a gas-fired central heating system with a modern glow-worm boiler.



Visit us at  
[www.pooletownsend.co.uk](http://www.pooletownsend.co.uk)  
[enquiries@pooletownsend.co.uk](mailto:enquiries@pooletownsend.co.uk)

**We are open**  
 Monday – Friday 9.00 – 5.00  
 Saturday 9.00 – 1.00

Barrow 01229 811811  
 Ulverston 01229 588111  
 Grange 015395 33316  
 Kendal 01539 734455  
 Milnthorpe 015395 62044