



**POOLE
TOWNSEND**

Sanderling Lane, Dalton-in-Furness, IA15 8QG

£190,000

3 1 1



Location

what3words///sipwreck.remember.whistling

Description

This dormer bungalow is located in a lovely cul-de-sac location on the outskirts of town.

The living accommodation is split over two floors including the loft conversion that offers a double bedroom with en-suite WC.

The side access door leads you into the central hallway where there are doors leading to all of the ground floor accommodation with exception of the kitchen.

The living space is open plan, features a generous size lounge with open access to the adjacent dining space. There is a wall mounted fire, open fronted shelving and a useful built-in cupboard that also houses the boiler. There is an open tread stairwell to the first-floor accommodation and a door leading into the kitchen.

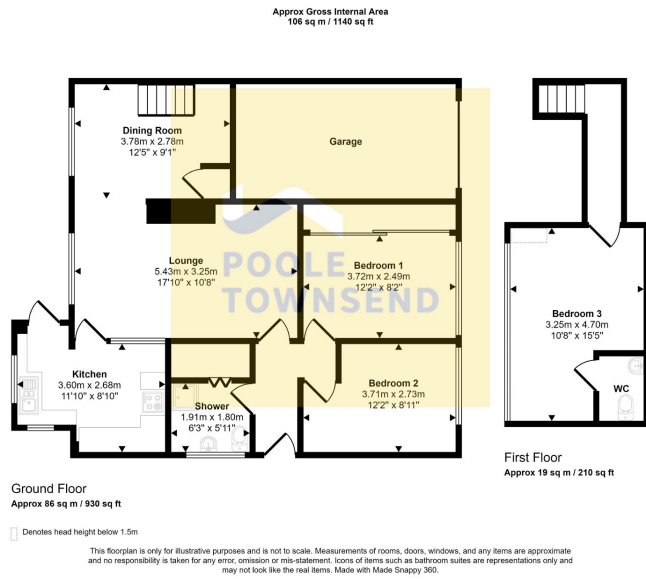
The kitchen has modern fitted units with a contrasting coloured worktop that extends throughout the room. There is space to accommodate a freestanding cooker, washing machine and fridge freezer. There is a rear access door leading you into the rear garden via the patio where there are steps leading down to the lawn covered garden where there are mature trees and planting.

The two bedrooms are at the front of the property with one having wall-to-wall fitted wardrobes with full height sliding doors.

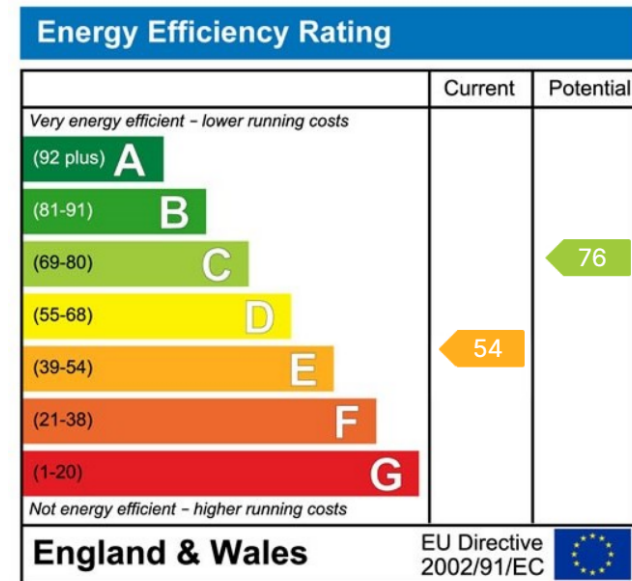
The shower room has a three-piece suite with a WC, a vanity basin with cupboard storage below and a quadrant shape shower enclosure with an electric shower fitted within. There is a tall ladder style radiator, extractor fan and a large built-in cupboard.

The first-floor landing area has low-level access panels leading into the residual loft space and also a door taking you into the third bedroom which is a double room with a full width window to the rear elevation offering a lovely view. There is also an en-suite WC with





- Dormer Bungalow
- Open plan living space
- 3 bedrooms
- No upper chain
- Lovely cul-de-sac
- Mature trees and planting
- Ample off road parking
- Lovely gardens



Visit us at
www.pooletownsend.co.uk
enquiries@pooletownsend.co.uk

We are open
 Monday – Friday 9.00 – 5.00
 Saturday 9.00 – 1.00

Barrow 01229 811811
 Ulverston 01229 588111
 Grange 015395 33316
 Kendal 01539 734455
 Milnthorpe 015395 62044