



**POOLE
TOWNSEND**

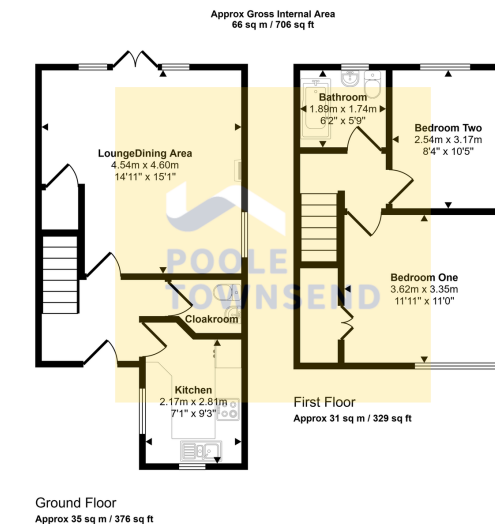
1 Grayrigge Croft, Kentsbank Road Grange over Sands £235,000

2 1 1



- Centrally located in the Edwardian coastal town of Grange.
- Spacious lounge/diner with a gas fire and glazed doors opening onto the rear garden.
- A convenient additional toilet on the ground floor.
- Three-piece bathroom upstairs.
- Council Tax Band C. Freehold
- Bright and airy living space spread across two floors.
- Kitchen: Ample storage cupboards and worktop space.
- Two generous double bedrooms upstairs.
- Well-established lawned and patio gardens surrounding the property, with space for a large storage shed.





This floorplan is only for illustrative purposes and is not to scale. Measurements of rooms, doors, windows, and any items are approximate and no responsibility is taken for any error, omission or mis-statement. Icons of items such as bathroom suites are representations only and may not look like the real items. Made with Made Snappy 360.

Centrally located in the charming Edwardian coastal town of Grange, this attractively presented end terraced property offers bright and airy living space with generous accommodation arranged across two floors. The ground floor features a spacious lounge/diner with gas fire and glazed doors that open seamlessly onto the rear garden, along with a kitchen offering ample storage cupboards and worktop space, and a convenient ground floor cloakroom. Upstairs, there are two generous double bedrooms providing comfortable accommodation, together with a three-piece bathroom. Outside, well-established lawned and patio gardens surround the property on all sides, creating a private area to relax and dine, with space for a large storage shed ideal for tools or hobbies. The property further benefits from a detached garage and driveway parking. Offered with no onward chain, this is an excellent opportunity for a wide

Visit us at
www.pooletownsend.co.uk
enquiries@pooletownsend.co.uk

We are open
 Monday – Friday 9.00 – 5.00
 Saturday 9.00 – 1.00

Barrow 01229 811811
 Ulverston 01229 588111
 Grange 015395 33316
 Kendal 01539 734455
 Milnthorpe 015395 62044