



**POOLE
TOWNSEND**

Flat 5 Kilmidyke Mansions, Grange over Sands

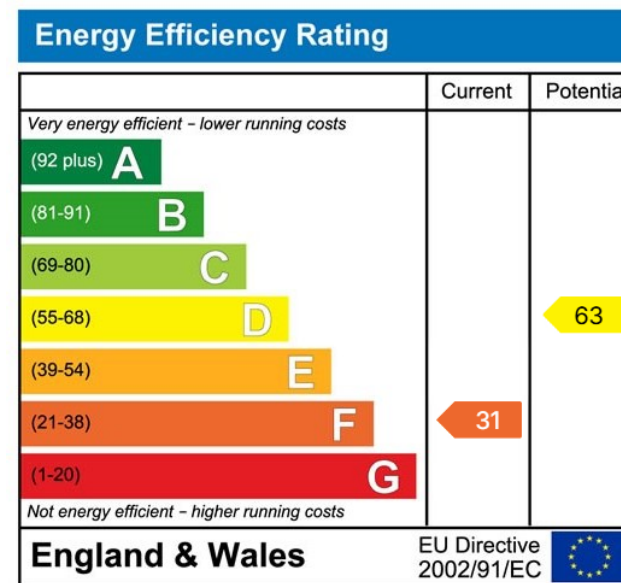
£220,000

3 2 1

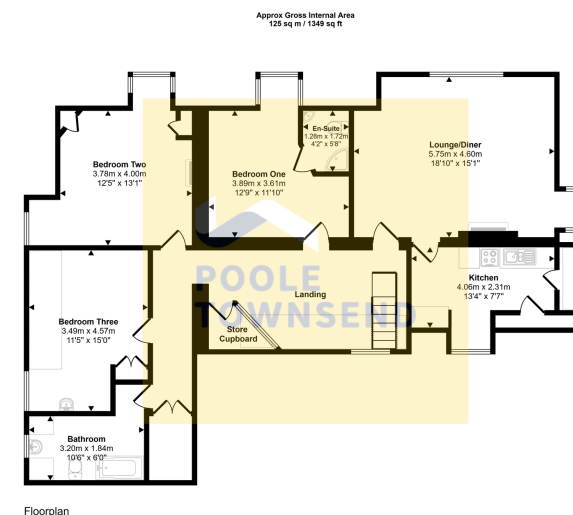


- Top Floor of a Magnificent Former Gentleman's Residence
- Ideal Opportunity to Update and Personalise
- 3 Double Bedrooms
- Private Garage
- Council Tax D
- Breath-Taking Grange
- Bright Lounge Diner
- Beautifully Maintained Communal Gardens
- Leashold
- NO UPPER CHIAN





Occupying the top floor of a magnificent former gentleman's residence, this deceptively spacious apartment commands breath-taking views across Grange, sweeping from the Howgills to Ingleborough and as far as Blackpool Tower. Offering a superb opportunity for buyers to update and personalise, the property provides versatile accommodation in an enviable setting. A bright lounge/diner with electric fire enjoys views across the manicured communal gardens towards Morecambe Bay, leading through to a well-proportioned kitchen. The landing creates a charming space to read or relax, while giving access to three generous double bedrooms, including a master with en-suite, and a family bathroom. Outside, residents benefit from beautifully maintained communal gardens, a private garage, and parking. Offered with no onward chain, this exceptional apartment would make an ideal main residence or a second



Floorplan

Decimals head height below 1.5m

This floorplan is only for illustrative purposes and is not to scale. Measurements of rooms, doors, windows, and any items are approximate and no responsibility is taken for any error, omission or mis-statement. Icons of items such as bathroom suites are representations only and may not look like the real items. Made with Magic Snaggy 360.

Visit us at
www.pooletownsend.co.uk
enquiries@pooletownsend.co.uk

We are open
 Monday – Friday 9.00 – 5.00
 Saturday 9.00 – 1.00

Barrow 01229 811811
 Ulverston 01229 588111
 Grange 015395 33316
 Kendal 01539 734455
 Milnthorpe 015395 62044