



**POOLE
TOWNSEND**

9 Cedric Walk, Grange over Sands

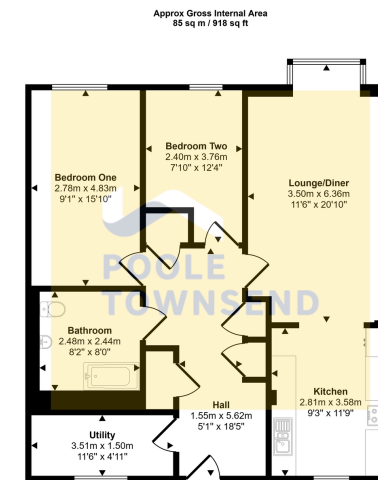
£178,125

🛏 2 🚿 1 🛋 1



- Beautifully Presented Ground Floor Flat
- Stylish Open Plan Living
- Finished to a High Standard
- Convenient Location
- Council Tax Band B
- Breathtaking Views across The Bay
- 2 Generous Double Bedrooms
- Shared Ownership
- Leasehold
- Early Viewing Recommended

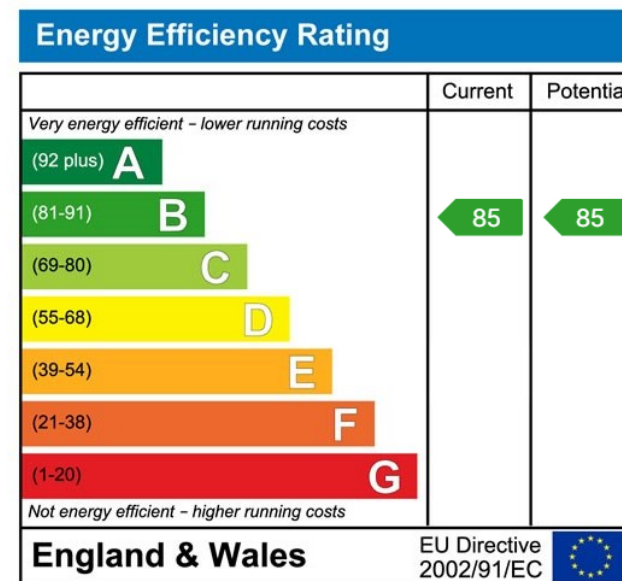




Floorplan

This floorplan is only for illustrative purposes and is not to scale. Measurements of rooms, doors, windows, and any items are approximate and no responsibility is taken for any error, omission or mis-statement. Icons of items such as bathroom suites are representations only and may not look like the real items. Made with Made Snappy 360.

Nestled at the head of a modern residential development, this beautifully presented ground floor apartment enjoys breath-taking views across Morecambe Bay and towards the fells beyond. Deceptively spacious and flooded with natural light, the property features a stylish open-plan living kitchen, two generous double bedrooms, a contemporary bathroom, and a separate laundry room. Finished to a high standard throughout with modern décor and quality fixtures, this is an ideal home for first-time buyers, retirees, or those seeking low-maintenance living in a peaceful setting. Offered at 75% of market value, this fantastic opportunity is available under an affordable housing scheme, offering quality, comfort, and outstanding value.



Visit us at
www.pooletownsend.co.uk
enquiries@pooletownsend.co.uk

We are open
 Monday – Friday 9.00 – 5.00
 Saturday 9.00 – 1.00

Barrow 01229 811811
 Ulverston 01229 588111
 Grange 015395 33316
 Kendal 01539 734455
 Milnthorpe 015395 62044