



**POOLE
TOWNSEND**

Lindale Road, Grange-over-sands, LA11 6EP

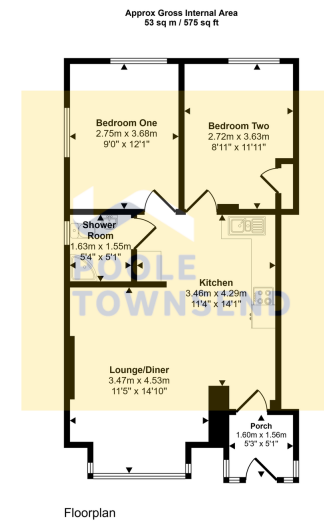
£170,000

🛏 2 🚿 1 🚗 1



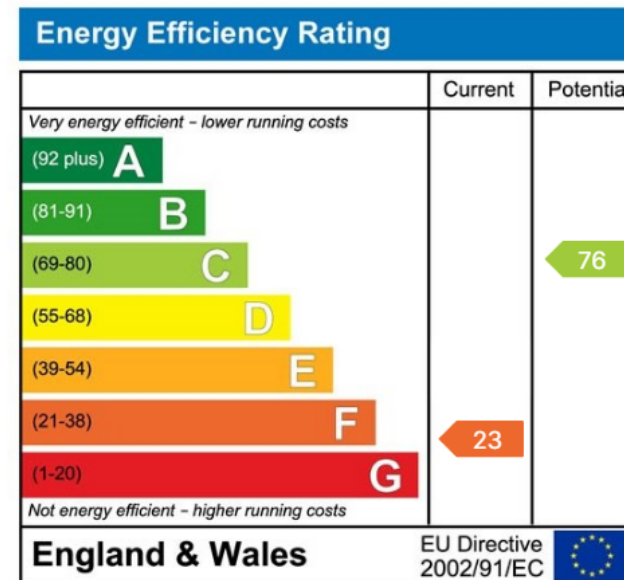
- Spectacular bay views
- Flat walk to promenade
- Stylishly presented
- Main residence or second home appeal
- Council tax
- Convenient for station
- Delightful outside space
- 'Move in' condition
- Two double bedrooms
- Leasehold





This floorplan is only for illustrative purposes and is not to scale. Measurements of rooms, doors, windows, and any items are approximate and no responsibility is taken for any error, omission or mis-statement. Icons of items such as bathroom suites are representations only and may not look like the real items. Made with Made Snappy 360.

Enjoying spectacular panoramic views across Morecambe Bay, this impressive ground floor apartment offers stylish, low-maintenance living in a highly desirable location. Ideally situated within easy reach of town centre amenities, the train and bus stations, and the scenic promenade, the property makes an ideal main residence or second home. Beautifully presented and in move-in condition, the accommodation comprises a bright and spacious open-plan lounge and dining area with a modern fitted kitchen, two generous double bedrooms, and a contemporary shower room. A standout feature is the courtyard seating area, perfect for relaxing and soaking in the ever-changing coastal views.



Visit us at
www.pooletownsend.co.uk
enquiries@pooletownsend.co.uk

We are open
 Monday – Friday 9.00 – 5.00
 Saturday 9.00 – 1.00

Barrow 01229 811811
 Ulverston 01229 588111
 Grange 015395 33316
 Kendal 01539 734455
 Milnthorpe 015395 62044