



**POOLE
TOWNSEND**

6 The Regent Main Street

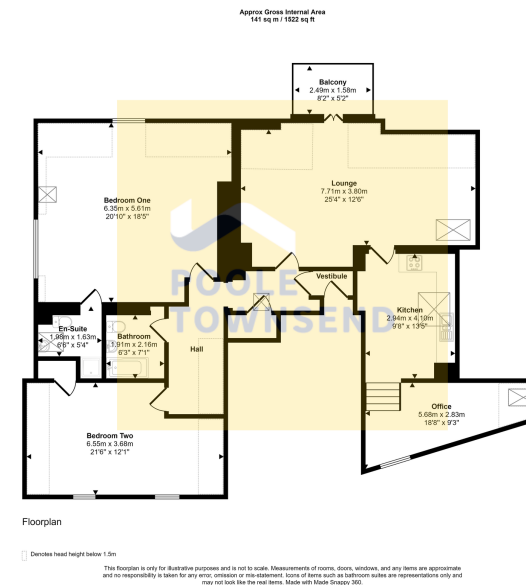
£250,000

🛏 2 🍳 2 🛋 1

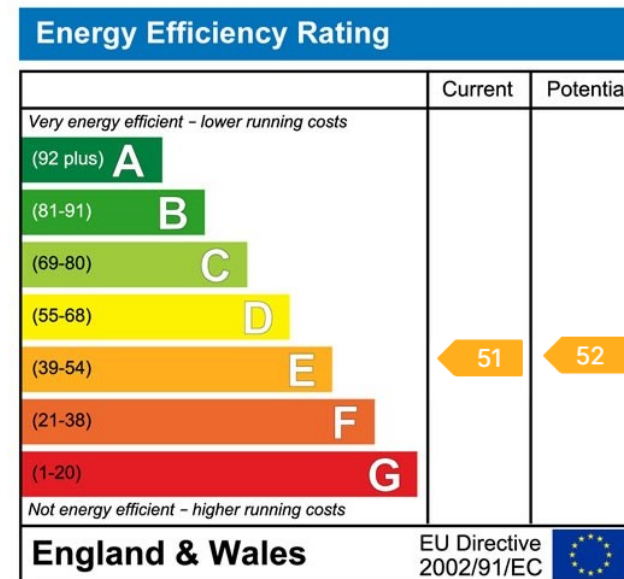


- Smart penthouse apartment
- Central location
- Far reaching bay views
- Private balcony
- Allocated parking
- Open plan living area
- Two double bedrooms
- Master with ensuite
- Leasehold
- Council tax band D





Centrally located within the charming Edwardian coastal town of Grange-over-Sands, this deceptively spacious penthouse apartment enjoys spectacular, far-reaching views across Morecambe Bay towards Far Arnsdale and Silverdale. Converted from a traditional stone building, the property is naturally bright and beautifully combines original character features with modern décor, fixtures, and fittings. The well-appointed accommodation includes an open-plan lounge and dining area that flows seamlessly into a contemporary kitchen and adjoining office space. There are two double bedrooms, including a master with en-suite and bay views, as well as a stylish bathroom. Further benefits include a private balcony seating area, for enjoying the picturesque surroundings, and an allocated parking space. Perfect as a main residence or a second home, this exceptional apartment offers a unique blend



Visit us at
www.pooletownsend.co.uk
enquiries@pooletownsend.co.uk

We are open
 Monday – Friday 9.00 – 5.00
 Saturday 9.00 – 1.00

Barrow 01229 811811
 Ulverston 01229 588111
 Grange 015395 33316
 Kendal 01539 734455
 Milnthorpe 015395 62044