



**POOLE
TOWNSEND**

5 School Hill, Lindale

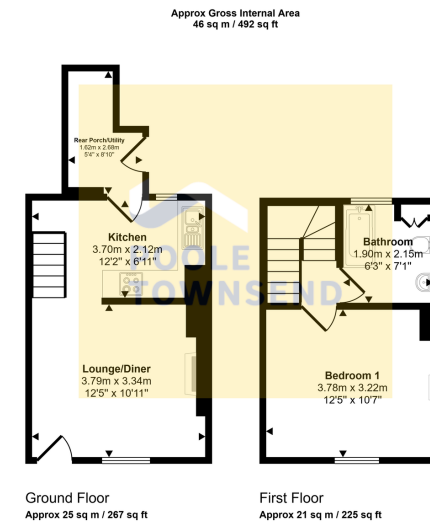
£200,000

1 1 1



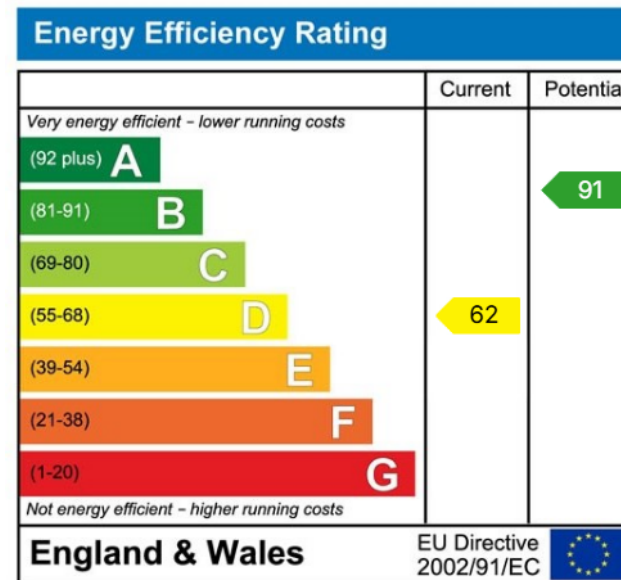
- Charming Stone Built Cottage • Situated in the Lake District National Park
- Village Location
- Naturally Bright And Airy
- Low Maintenance Gardens
- Council Tax
- Traditional Charm with Modern Comfort
- Double Bedroom
- Freehold
- No Upper Chain





This floorplan is only for illustrative purposes and is not to scale. Measurements of rooms, doors, windows, and any items are approximate and no responsibility is taken for any error, omission or mis-statement. Icons of items such as bathroom suites are representations only and may not look like the real items. Made with Made Snappy 360.

Nestled in the heart of the picturesque Lake District National Park, this attractively presented home perfectly blends traditional charm with modern comfort. Surrounded by charming, stone-built cottages, the property is naturally bright and airy, set across two well-designed floors. The ground floor features a cosy lounge/diner with exposed beams, a characterful stone wall, and a gas-fired stove, ideal for relaxing evenings. A separate kitchen and utility area provide practicality and convenience. Upstairs, the spacious double bedroom boasts a lovely cast iron fireplace and plenty of natural light, accompanied by a well-appointed bathroom. Outside, the low-maintenance garden is framed by established bluebells, offering a peaceful spot to enjoy the surroundings. With the added benefit of on-road parking, this delightful home is perfectly suited as a main residence or a tranquil second home.



Visit us at
www.pooletownsend.co.uk
enquiries@pooletownsend.co.uk

We are open
 Monday – Friday 9.00 – 5.00
 Saturday 9.00 – 1.00

Barrow 01229 811811
 Ulverston 01229 588111
 Grange 015395 33316
 Kendal 01539 734455
 Milnthorpe 015395 62044