



**POOLE
TOWNSEND**

Apartment 4 Aynsome Manor Park Aynsome Lane, Cartmel

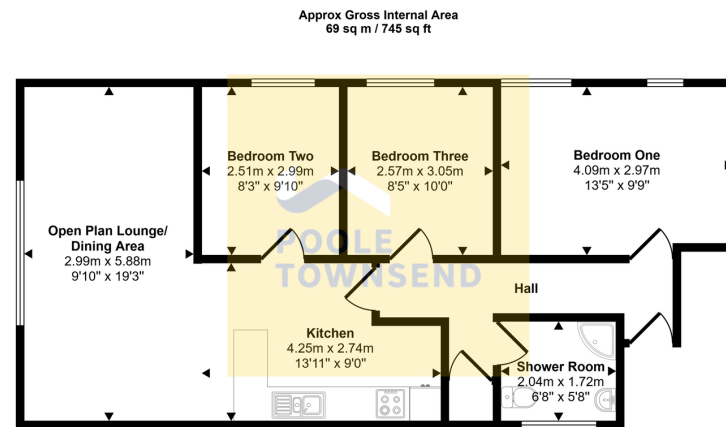
£325,000

3 1 1



- Exceptional First-Floor Apartment
- Finished to a High Standard
- 3 Generous Bedrooms
- Allocated Parking
- Leasehold. Council Tax Band D
- Set Around A Small Paved Court Yard
- Bright Open Plan Living
- Contemporary Shower Room
- Access to Communal Grounds
- NO UPPER CHAIN





Floorplan

This floorplan is only for illustrative purposes and is not to scale. Measurements of rooms, doors, windows, and any items are approximate and no responsibility is taken for any error, omission or mis-statement. Icons of items such as bathroom suites are representations only and may not look like the real items. Made with Made Snappy 360.

Set around a small paved courtyard within the picturesque Aynsome Manor Park development, this exceptional first-floor apartment offers an ideal setting for both main residence living or as a tranquil holiday retreat. Finished to a high standard, the apartment is stylishly decorated with modern décor, fixtures, and fittings throughout. The accommodation includes three generous bedrooms, a contemporary shower room, and a bright, open-plan living space perfect for both relaxed living and entertaining. Additional benefits include allocated parking and access to the expansive communal grounds, making it a well-rounded property. Offered with no chain, it presents a fantastic opportunity to move in without delay.

Visit us at
www.pooletownsend.co.uk
enquiries@pooletownsend.co.uk

We are open
 Monday – Friday 9.00 – 5.00
 Saturday 9.00 – 1.00

Barrow 01229 811811
 Ulverston 01229 588111
 Grange 015395 33316
 Kendal 01539 734455
 Milnthorpe 015395 62044