



**POOLE
TOWNSEND**

Heads Drive, Grange-over-sands, LA11 7DY

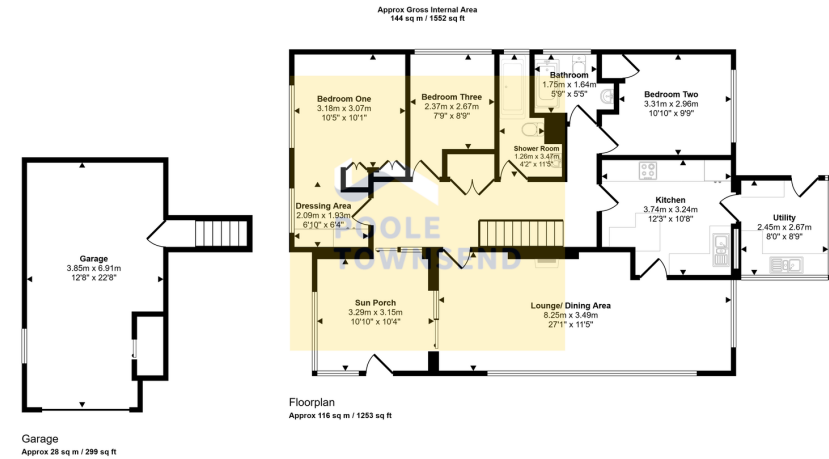
£500,000

3 2 1

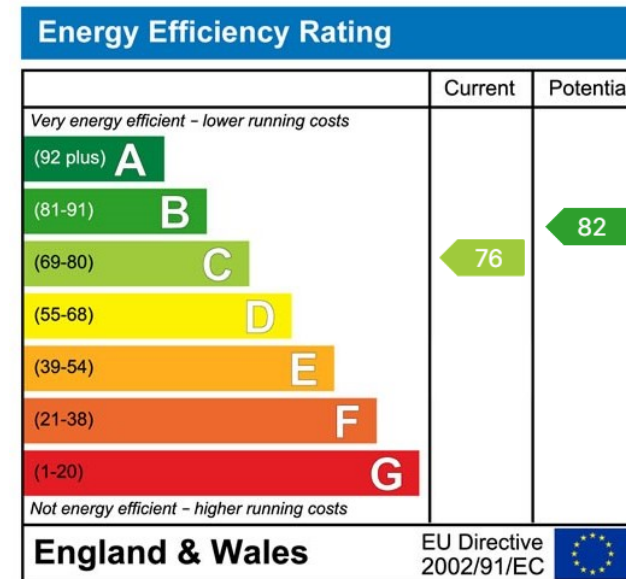


- Superb position
- Two bathrooms
- Multi fuel stove
- Manageable gardens
- Council tax band E Freehold
- Open views across bay
- Master bedroom dressing area
- Sun room
- Parking & garage
- Solar Panels And Battery





Occupying an elevated position with breath-taking views across Morecambe Bay and beyond, this exceptional home offers a peaceful retreat surrounded by beautifully maintained gardens, thoughtfully designed to provide inviting areas to relax and enjoy the serene surroundings. Inside, a bright and spacious lounge/diner with a multi-fuel stove creates a warm and welcoming atmosphere, complemented by a versatile sunroom, perfect for additional seating or dining. The kitchen is accompanied by a separate utility room for added convenience. The three bedrooms include two generous doubles with fitted wardrobes and a versatile single, perfect as a home office or additional bedroom. Completing the accommodation is a modern shower room and an additional bathroom. Outside, to the front, a private driveway leads to an integral single garage, offering ample parking and storage. Additionally, 16 solar



Visit us at
www.pooletownsend.co.uk
enquiries@pooletownsend.co.uk

We are open
 Monday – Friday 9.00 – 5.00
 Saturday 9.00 – 1.00

Barrow 01229 811811
 Ulverston 01229 588111
 Grange 015395 33316
 Kendal 01539 734455
 Milnthorpe 015395 62044