



**POOLE
TOWNSEND**

Nutwood Crescent, Grange-over-sands, LA11 6EZ

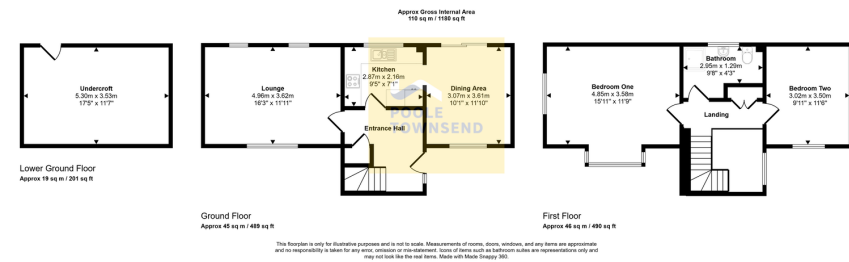
£325,000

2 1 2



- Peaceful Location
- End Terrace
- Bright Lounge
- Kitchen Diner
- 2 Double Bedrooms
- Large Under Croft
- Private Patio
- Enclosed Rear Garden
- Freehold Council Tax Band
- No Upper Chain





Occupying a peaceful yet central position in the picturesque Edwardian coastal town of Grange-over-Sands, this delightful end of terrace home offers a rare combination of space, convenience, and no upper chain. Generously proportioned, the property features two double bedrooms, a well-appointed shower room, a bright and inviting lounge, and a spacious kitchen/diner with glazed doors opening onto the enclosed rear garden. Outside, the property benefits from off-road parking, a private patio, and access to a large under croft, providing ample storage space. Whether you're looking for a permanent residence or a tranquil coastal retreat, this charming home is perfectly positioned to enjoy all that Grange-over-Sands has to offer.

Visit us at
www.pooletownsend.co.uk
enquiries@pooletownsend.co.uk

We are open
 Monday – Friday 9.00 – 5.00
 Saturday 9.00 – 1.00

Barrow 01229 811811
 Ulverston 01229 588111
 Grange 015395 33316
 Kendal 01539 734455
 Milnthorpe 015395 62044