



**POOLE  
TOWNSEND**



# Charney Court, Grange over Sands

£325,000

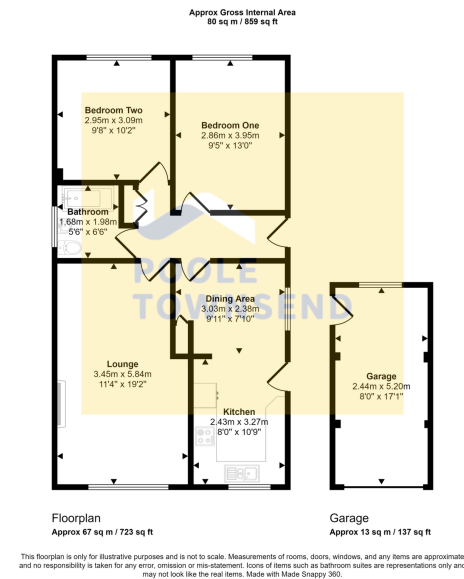
🛏 2 🚿 1 🛋 1



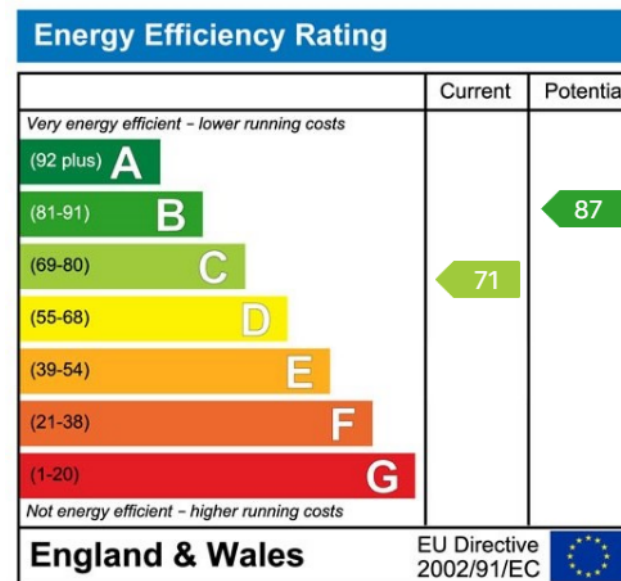


- Views across Morecambe Bay
- Popular and private residential area situated in an elevated location
- The two double bedrooms overlook the rear garden
- Established garden with colourful shrubs and bushes
- Freehold
- Detached true bungalow
- Bright and spacious lounge, kitchen/diner, a fabulous social dining area and
- ~~Work space~~ which extends across the back, providing a delightful area for alfresco simple and entertaining and a detached garage,





Situated in an elevated location on the edge of the town centre and enjoying delightful views across Morecambe bay is this detached true bungalow. Featuring a bright lounge, a spacious kitchen/diner with fitted and included appliances, two double bedrooms and a sleek bathroom. Complete with low maintenance front and rear gardens, ample driveway parking and a detached garage, this property must be viewed to be appreciated. No upper chain.



Visit us at  
[www.pooletownsend.co.uk](http://www.pooletownsend.co.uk)  
[enquiries@pooletownsend.co.uk](mailto:enquiries@pooletownsend.co.uk)

We are open  
 Monday – Friday 9.00 – 5.00  
 Saturday 9.00 – 1.00

Barrow 01229 811811  
 Ulverston 01229 588111  
 Grange 015395 33316  
 Kendal 01539 734455  
 Milnthorpe 015395 62044