



**POOLE  
TOWNSEND**



# The Old Pottery, Mill House Yard, Lindale

£250,000

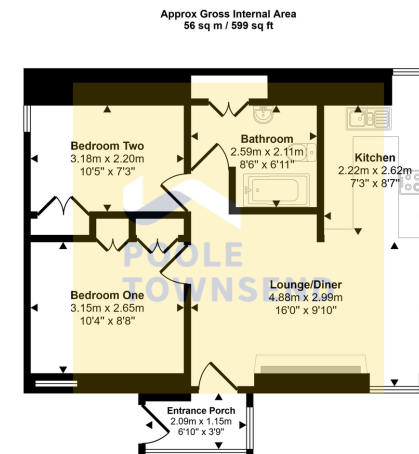
2 1 1





- Stylishly Presented Ground Floor Flat
- Comfortable Kitchen
- Modern Bathroom
- Allocated Parking
- Situated in the Lake District National Park
- Open Plan Reception Room
- Generously Sized Bedrooms
- Low Maintenance Courtyard
- Ideal as Second Home or Airbnb
- EPC Rating: tbc

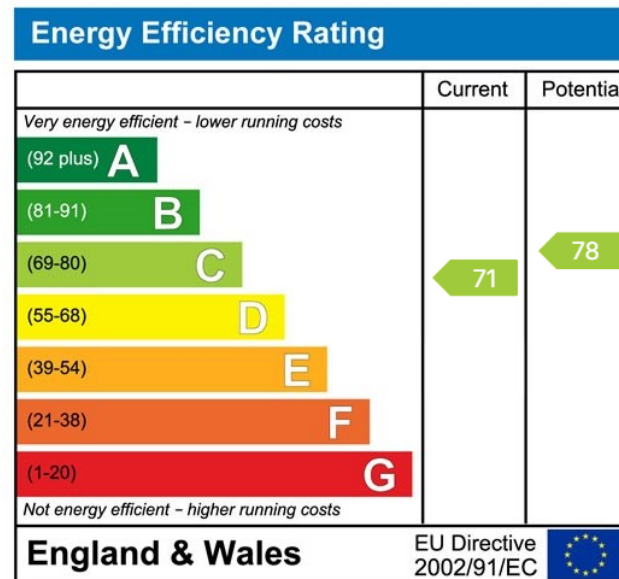




Floorplan

This floorplan is only for illustrative purposes and is not to scale. Measurements of rooms, doors, windows, and any items are approximate and no responsibility is taken for any error, omission or mis-statement. Icons of items such as bathroom suites are representations only and may not look like the real items. Made with Made Snappy 360.

Nestled within the picturesque Lake District National Park and surrounded by traditional stone built cottages is this impressive and stylishly presented ground floor flat. Retaining original wooden beams and seamlessly blending high quality fixtures and fittings, this naturally bright and spacious home includes an open plan reception room which flows through to an adjoining kitchen. There are also two generous size bedrooms, each equipped with fitted wardrobes and a modern bathroom. Complete with a low maintenance courtyard garden with planted borders and allocated parking, this property provides the ideal main residence, holiday let or second home. No Chain.



Visit us at  
[www.pooletownsend.co.uk](http://www.pooletownsend.co.uk)  
[enquiries@pooletownsend.co.uk](mailto:enquiries@pooletownsend.co.uk)

We are open  
 Monday – Friday 9.00 – 5.00  
 Saturday 9.00 – 1.00

Barrow 01229 811811  
 Ulverston 01229 588111  
 Grange 015395 33316  
 Kendal 01539 734455  
 Milnthorpe 015395 62044