



**POOLE
TOWNSEND**

Delph Cottage, Witherslack, Grange-over-sands

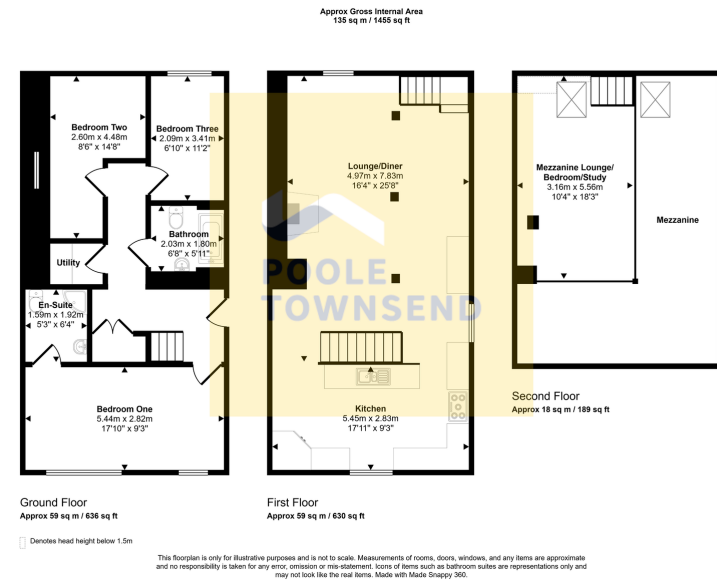
£375,000

3 2 2

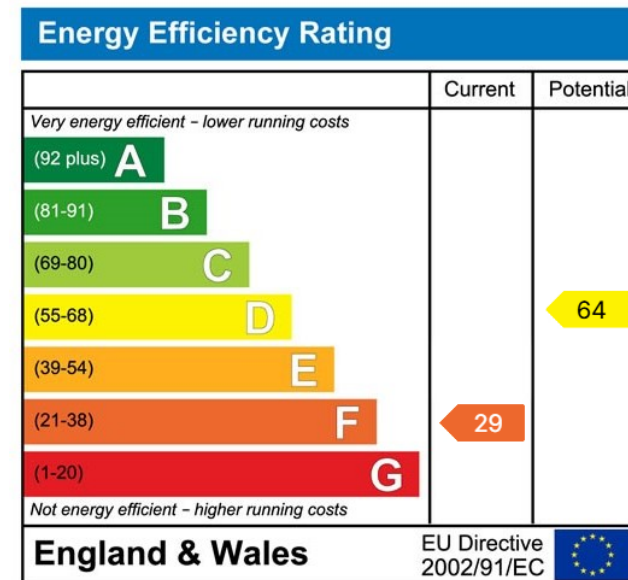


- Three Bed Barn Conversion
- Open Plan Kitchen & Living Area
- Off Road Parking
- Situated in the Lake District National Park
- Council Tax Band: E
- Over Three Floors
- Low Maintenance Patio Garden
- Surrounded by Picturesque Woodland
- Local Occupancy Clause Applies
- EPC Rating: F





This stunning Grade II listed barn conversion in the Lake District National Park perfectly blends charm and modernity, offering tranquility amid natural beauty. Nestled at the foot of Whitbarrow Scar and surrounded by picturesque woodland, the property features versatile living spaces across three floors, a low maintenance patio garden and plenty of off road parking. The open-plan kitchen and living area is enhanced by a flexible mezzanine on the second floor, whilst the ground floor includes three bedrooms, a bathroom, an en-suite shower room, and a utility room. Outside, you can relax in a lovely low-maintenance patio garden, and enjoy off-road parking for two to three vehicles. Please note that a local occupancy clause applies, making it a unique opportunity for those seeking a serene rural lifestyle.



Visit us at
www.pooletownsend.co.uk
enquiries@pooletownsend.co.uk

We are open
 Monday – Friday 9.00 – 5.00
 Saturday 9.00 – 1.00

Barrow 01229 811811
 Ulverston 01229 588111
 Grange 015395 33316
 Kendal 01539 734455
 Milnthorpe 015395 62044