



**POOLE
TOWNSEND**

Edenmount Road, Grange-over-Sands, LA11 6BN

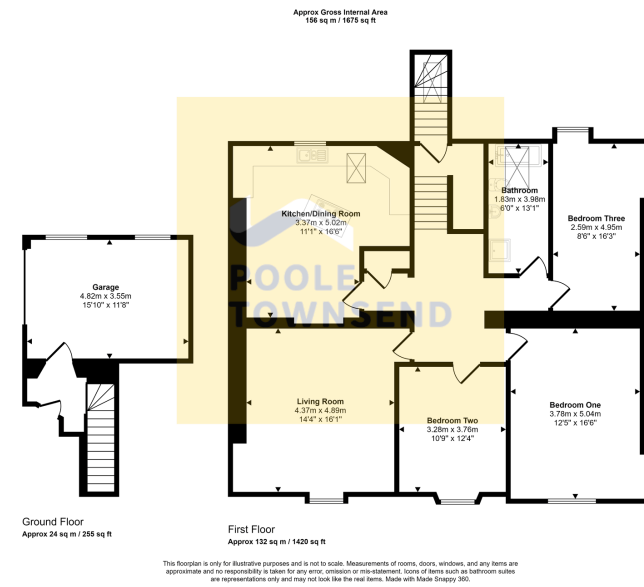
£220,000

3 1 1

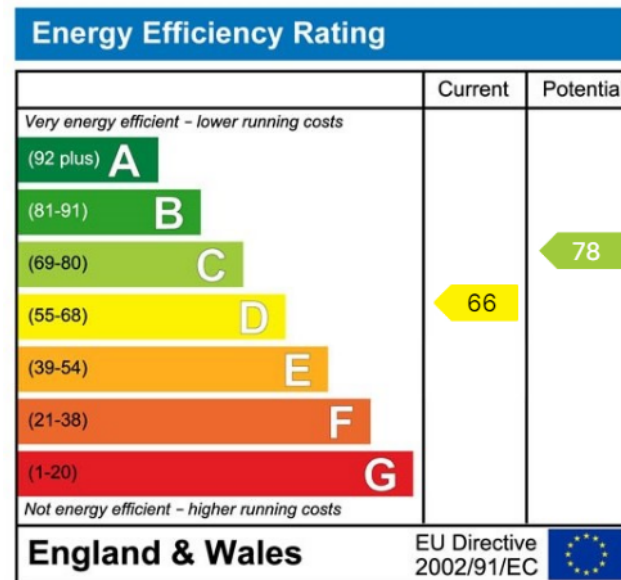


- Second Floor Apartment
- Views over Morecambe Bay
- Short Walk From Town Centre
- 3 Bedrooms
- Spacious Living
- Garage
- Leasehold
- NO UPPER CHAIN





Situated a short walk from the town centre, is this deceptively spacious penthouse apartment. Located on the second floor of a traditional stone-built property, the apartment enjoys elevated and panoramic views over Morecambe Bay towards Far Arnside and Blackpool Tower in the distance. Boasting three generous size bedrooms, a large living room, spacious kitchen diner and modern fitted four-piece bathroom, as well as off road parking and an integral garage, this property would suit those seeking a main residence or second home. Internal viewing is advised.



Visit us at
www.pooletownsend.co.uk
enquiries@pooletownsend.co.uk

We are open
 Monday – Friday 9.00 – 5.00
 Saturday 9.00 – 1.00

Barrow 01229 811811
 Ulverston 01229 588111
 Grange 015395 33316
 Kendal 01539 734455
 Milnthorpe 015395 62044