



**POOLE  
TOWNSEND**

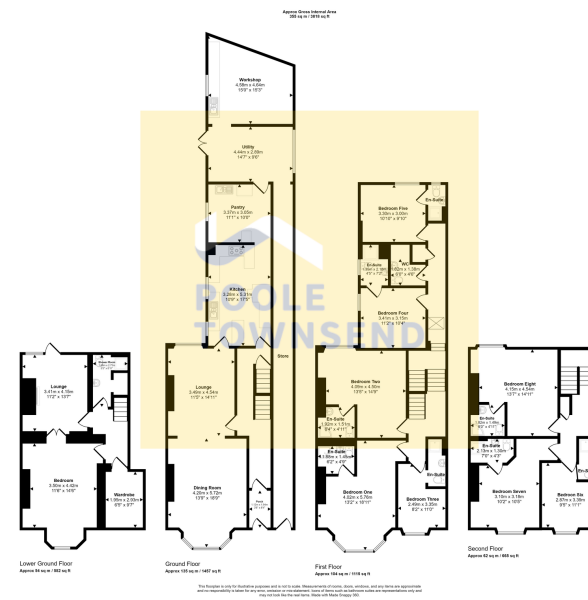
Somerset House, Kents Bank Road, Grange Over Sands  
£425,000

9 10 2

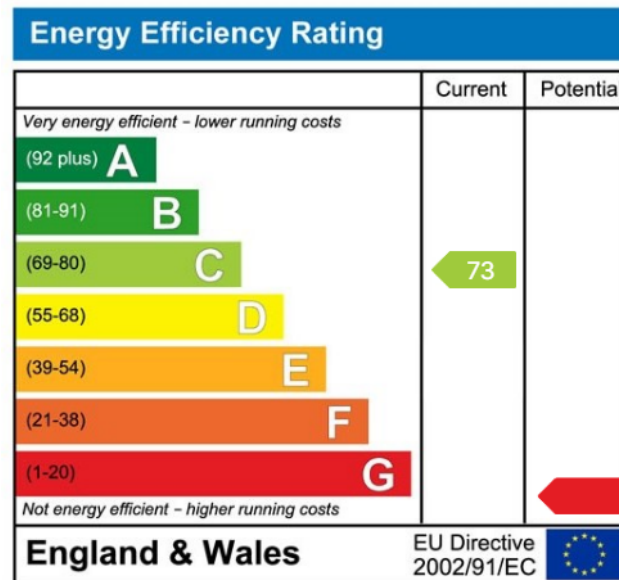


- Deceptively Spacious Bed and Breakfast
- Centrally Located
- Communal Dining and Living Room
- Court Yard Patio
- Council Tax Band A
- Separate Owners Living and Breakfast
- 8 Letting Bedrooms with En-Suite
- Large Working Kitchen Room
- Freehold
- Must Be Viewed to Appreciated





Centrally located within the picturesque Edwardian coastal town of Grange over Sands is this deceptively spacious B&B with separate owners' living and bedroom accommodation. Laid across four floors, the B&B accommodation includes eight comfortable en-suite bedrooms, with access to a communal dining and living room. There is also large working kitchen, pantry, laundry and store room, and private access to the owners accommodation on the lower ground floor. With the added benefit of a courtyard patio and easy access on foot to a wide variety of amenities, this property must be viewed to be appreciated.



Visit us at  
[www.pooletownsend.co.uk](http://www.pooletownsend.co.uk)  
[enquiries@pooletownsend.co.uk](mailto:enquiries@pooletownsend.co.uk)

We are open  
 Monday – Friday 9.00 – 5.00  
 Saturday 9.00 – 1.00

Barrow 01229 811811  
 Ulverston 01229 588111  
 Grange 015395 33316  
 Kendal 01539 734455  
 Milnthorpe 015395 62044