



**POOLE  
TOWNSEND**



# Meathop Court, Grange

£420,000

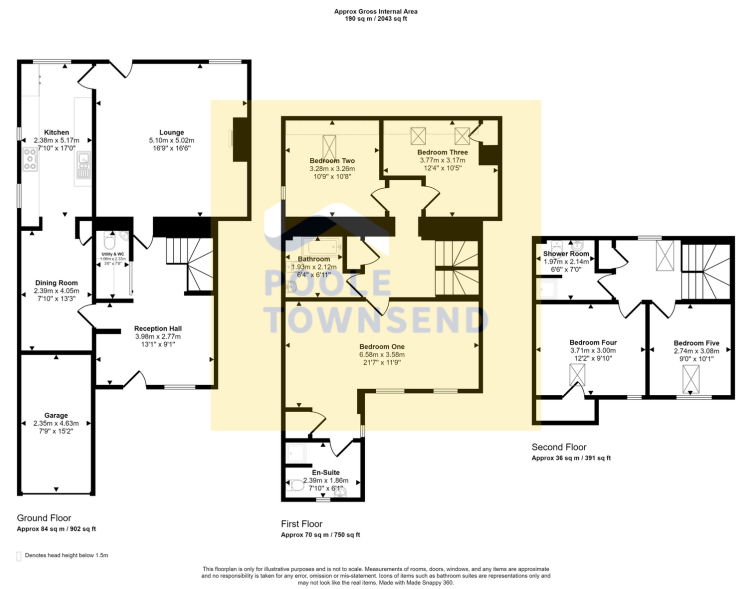
5 3 2



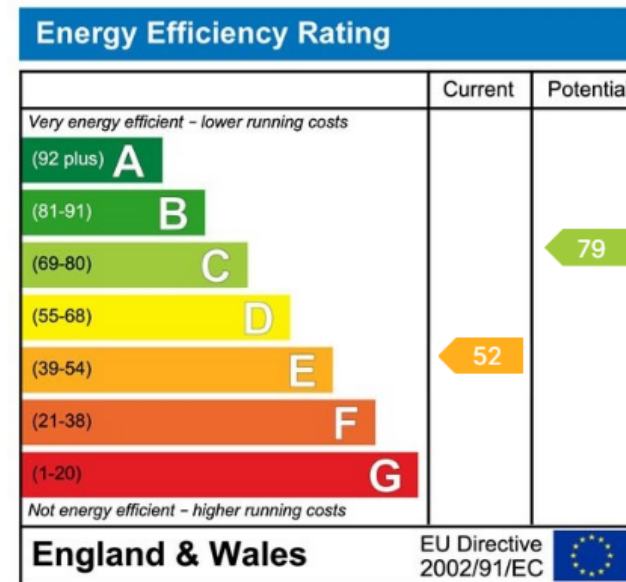


- Spacious Barn Conversion
- Peaceful Hamlet Location
- Beautifully Presented
- 2 Reception Rooms
- 5 Bedrooms
- Picturesque Views
- Off Road Parking
- Garage
- Council Tax Band F, Freehold
- Local Occupancy Clause Applies





Nestled within the peaceful hamlet of Meathop is this deceptively spacious and versatile barn conversion, with accommodation arranged over three floors. Well presented throughout with charm and character around every corner from deep set, low windows, thick walls to modern necessities such as up to date bathrooms, kitchen, solar panels and an air source heat pump (paid for indenendantly by the current owners). The ground floor has a traditional layout of a welcoming entrance hall leading to two reception rooms, a kitchen and separate utility & WC, with three double bedrooms, bathroom and ensuite to the first floor and a two further double bedrooms and a shower room to the second floor. Outside, there is off road parking for two/three cars, an attached garage and a low maintenance patio to sit and enjoy the picturesque views across open fields to Whitbarrow Scar in the distance. Local



Visit us at  
[www.pooletownsend.co.uk](http://www.pooletownsend.co.uk)  
[enquiries@pooletownsend.co.uk](mailto:enquiries@pooletownsend.co.uk)

We are open  
 Monday – Friday 9.00 – 5.00  
 Saturday 9.00 – 1.00

Barrow 01229 811811  
 Ulverston 01229 588111  
 Grange 015395 33316  
 Kendal 01539 734455  
 Milnthorpe 015395 62044