



**POOLE  
TOWNSEND**

# 1 The Regent, Main Street, Grange-Over-Sands, LA11 6DY

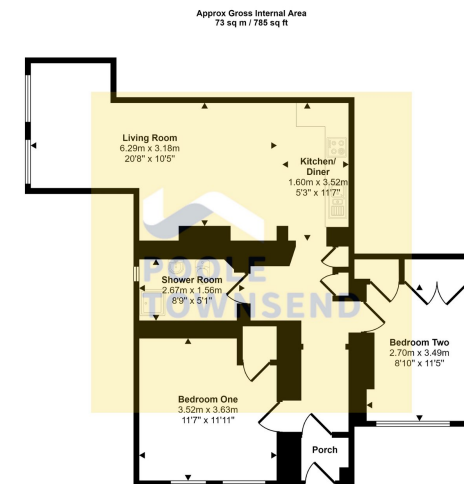
£230,000

🛏️ 2 🚿 1 🚻 1



- Leasehold
- Council tax band C
- Ground floor apartment
- Beautifully presented
- Views of Morecambe Bay
- Convenient town centre location
- Bright and airy
- 2 double bedrooms
- Plenty of storage
- Open plan living

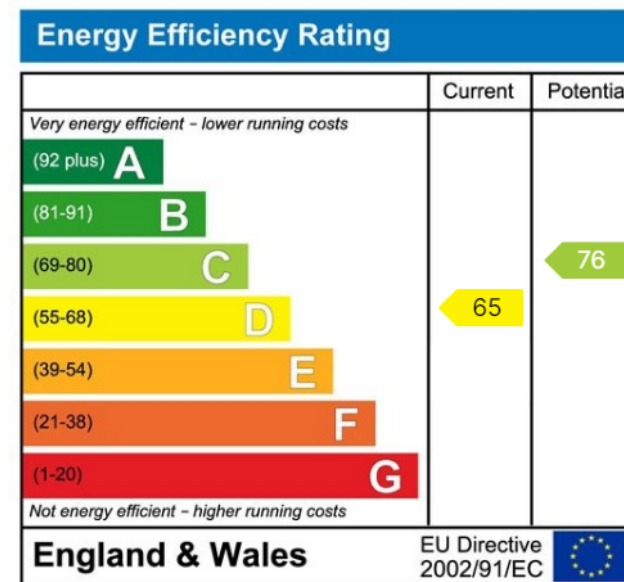




Floorplan

This floorplan is only for illustrative purposes and is not to scale. Measurements of rooms, doors, windows, and any items are approximate and no responsibility is taken for any error, omission or mis-statement. Icons of items such as bathroom suites are representations only and may not look like the real items. Made with Make Energy 360.

An impressive and beautifully presented ground floor apartment centrally located within the Edwardian coastal resort of Grange-over-Sands. Converted from a former harbour masters house, the property is bright and airy throughout and features two double bedrooms, a modern fitted shower room and a spacious, open plan reception room, with outlooks onto Morecambe Bay and scenic countryside. A fantastic opportunity for those looking for a primary or secondary home.



Visit us at  
[www.pooletownsend.co.uk](http://www.pooletownsend.co.uk)  
[enquiries@pooletownsend.co.uk](mailto:enquiries@pooletownsend.co.uk)

We are open  
 Monday – Friday 9.00 – 5.00  
 Saturday 9.00 – 1.00

Barrow 01229 811811  
 Ulverston 01229 588111  
 Grange 015395 33316  
 Kendal 01539 734455  
 Milnthorpe 015395 62044