



**POOLE
TOWNSEND**

Dalehead, The Heads, Grange over Sands

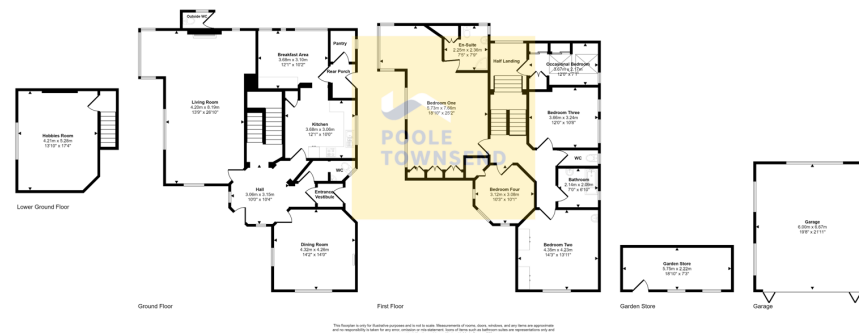
£850,000

🛏️ 4 🚿 2 🚺 2

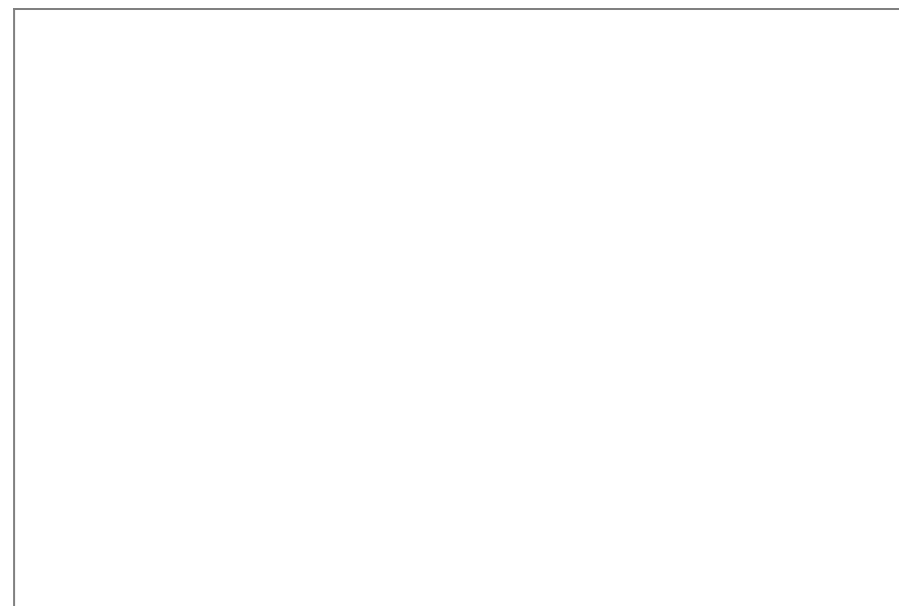


- Substantial plot
- Extensive gardens
- Period features
- 4 double bedrooms
- Council tax band
- Panoramic bay views
- Detached double garage
- 2 reception rooms
- Master suite
- Freehold





Positioned on a substantial plot and occupying a commanding position with panoramic open aspect views to Morecambe Bay and beyond, is this superb 1920's home. Sympathetically extended and developed to create a fabulous family abode, this naturally bright property features an impressively grand living room with open fire, a formal dining room with separate breakfast kitchen and utility area, a multi-function games or hobbies room and a cloakroom with WC. The upstairs accommodation includes four bedrooms, an occasional bedroom/study and bathroom, with the principal bedroom enjoying a dressing area and an en-suite facility. The extensive and varied gardens with full size tennis court are the crowning glory to this wonderful property and provide all year-round colour, coupled with ample parking available, a detached double garage and large garden store, this property is not to be missed.



Visit us at
www.pooletownsend.co.uk
enquiries@pooletownsend.co.uk

We are open
 Monday – Friday 9.00 – 5.00
 Saturday 9.00 – 1.00

Barrow 01229 811811
 Ulverston 01229 588111
 Grange 015395 33316
 Kendal 01539 734455
 Milnthorpe 015395 62044