



**POOLE
TOWNSEND**

Lyneal, Fell Drive, Grange over Sands

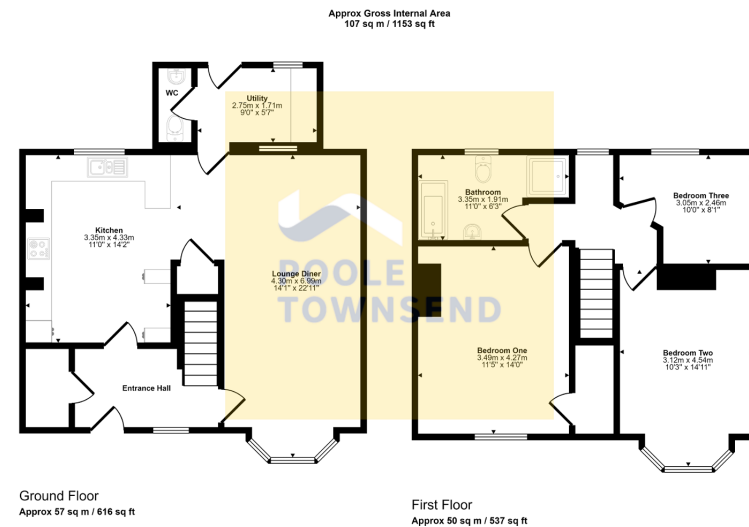
£310,000

3 1 1



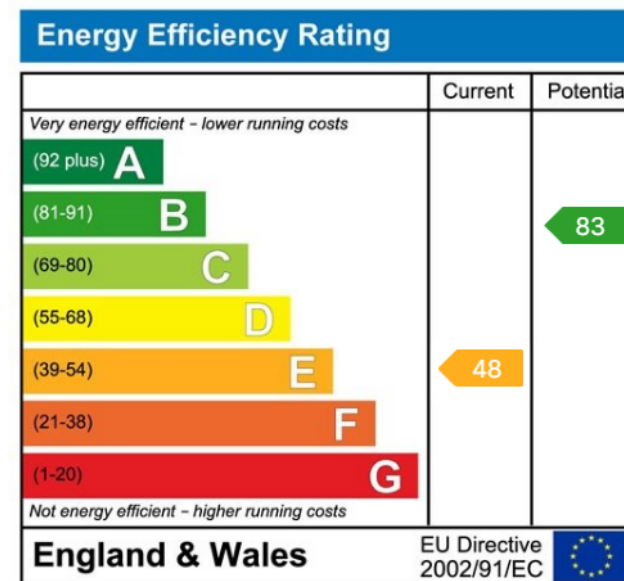
- Stylishly Presented Family Home
- 3 Bedrooms
- Large Lawn and Patio Garden
- Convenient Location
- Council Tax Band D
- Open Plan Living
- 4 Piece Bathroom Suite
- Freehold
- No upper Chain





This floorplan is only for illustrative purposes and is not to scale. Measurements of rooms, doors, windows, and any items are approximate and no responsibility is taken for any error, omission or mis-statement. Icons of items such as bathroom suites are representations only and may not look like the real items. Made with Made Snappy 360.

Situated on the edge of the town centre, whilst also within convenient reach of nearby amenities and primary school is this stylishly presented family home. Naturally bright and airy the property boasts three bedrooms, a four piece bathroom and a spacious open plan lounge/kitchen/diner with separate utility and WC. With the added benefit of off road parking and a large lawn and patio garden, this property must be viewed to be appreciated.



Visit us at
www.pooletownsend.co.uk
enquiries@pooletownsend.co.uk

We are open
 Monday – Friday 9.00 – 5.00
 Saturday 9.00 – 1.00

Barrow 01229 811811
 Ulverston 01229 588111
 Grange 015395 33316
 Kendal 01539 734455
 Milnthorpe 015395 62044