



**POOLE  
TOWNSEND**

# 14 Ashmount Gardens, Grange over Sands

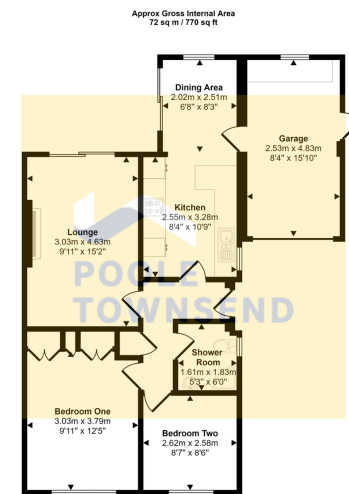
£350,000

🛏️ 2 🚿 1 🛋️ 2



- Highly Coveted And Private Cul-de-Sac
- Immaculately Presented
- Bright and Airy
- Well Tended Lawn and Patio Gardens
- Ample Driveway Parking
- Detached Bungalow
- Views Across Morecambe Bay
- 2 Bedrooms
- Garage
- Freehold Council Tax Band D

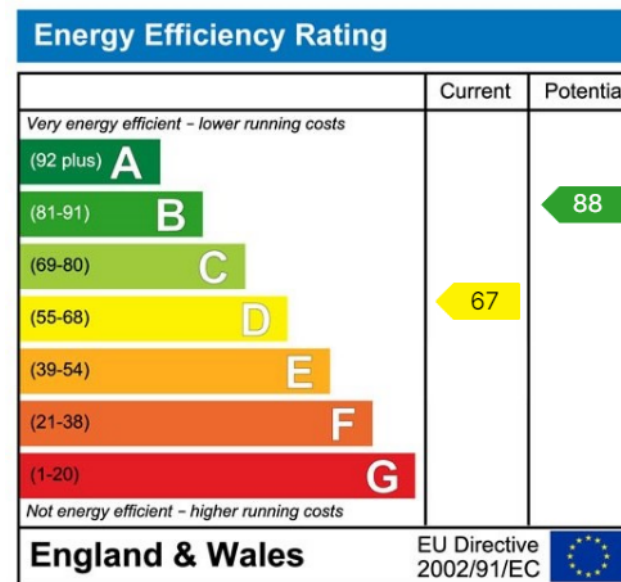




Floorplan

This floorplan is only for illustrative purposes and is not to scale. Measurements of rooms, doors, windows, and any items are approximate and no responsibility is taken for any error, omission or mis-statement. Icons of items such as bathroom suites are representations only and may not look like the real items. Made with Made Shippy 360.

Located within a highly coveted and private cul-de-sac, is this immaculately presented bungalow with views across Morecambe bay. Naturally bright and airy and offering generous size accommodation, the property includes a cosy lounge with gas fire, a spacious kitchen/diner, two double bedrooms and a shower room. Surrounded by well-tended lawn and patio gardens and with the added benefit of ample driveway parking and an integral garage, this property must be viewed to be appreciated.



Visit us at  
[www.pooletownsend.co.uk](http://www.pooletownsend.co.uk)  
[enquiries@pooletownsend.co.uk](mailto:enquiries@pooletownsend.co.uk)

We are open  
 Monday – Friday 9.00 – 5.00  
 Saturday 9.00 – 1.00

Barrow 01229 811811  
 Ulverston 01229 588111  
 Grange 015395 33316  
 Kendal 01539 734455  
 Milnthorpe 015395 62044