



**POOLE  
TOWNSEND**



# Methven Road, Grange-over-sands, LA11 7DU

£240,000

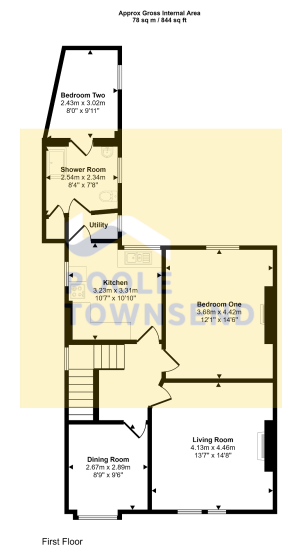
🛏️ 2 🚿 1 🚗 1





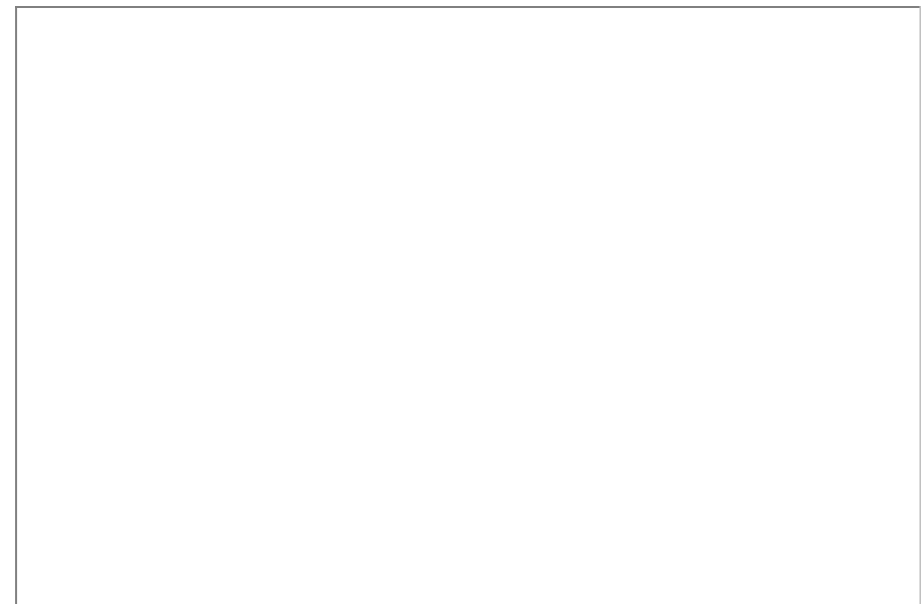
- Desirable location
- Bright and spacious
- Beautiful garden
- Council tax band B
- Generous accomodation
- Bay views
- Ideal second home or main residence
- Freehold





The floorplan is only for illustrative purposes and is not to scale. Measurements of rooms, doors, windows, and any items are approximate and are responsible to take for any error, omission or misstatement. Areas of items such as bathroom suites are representative only and may not look like the real items. Made with Magic Eraser 300.

Situated in a coveted residential location is this attractively presented and naturally bright first floor apartment. Featuring high ceilings, the generous and versatile accommodation includes two bedrooms with views of the bay, two reception rooms, a kitchen and shower room. The gardens have been wonderfully landscaped with a variety of colourful shrubs and bushes and there is also an attached store for tools etc. A superb property which will appeal to those seeking a main residence or second home within the popular coastal resort of Grange.



Visit us at  
[www.pooletownsend.co.uk](http://www.pooletownsend.co.uk)  
[enquiries@pooletownsend.co.uk](mailto:enquiries@pooletownsend.co.uk)

We are open  
 Monday – Friday 9.00 – 5.00  
 Saturday 9.00 – 1.00

Barrow 01229 811811  
 Ulverston 01229 588111  
 Grange 015395 33316  
 Kendal 01539 734455  
 Milnthorpe 015395 62044