



**POOLE
TOWNSEND**

1 Nutwood Manor, Grange Over Sands

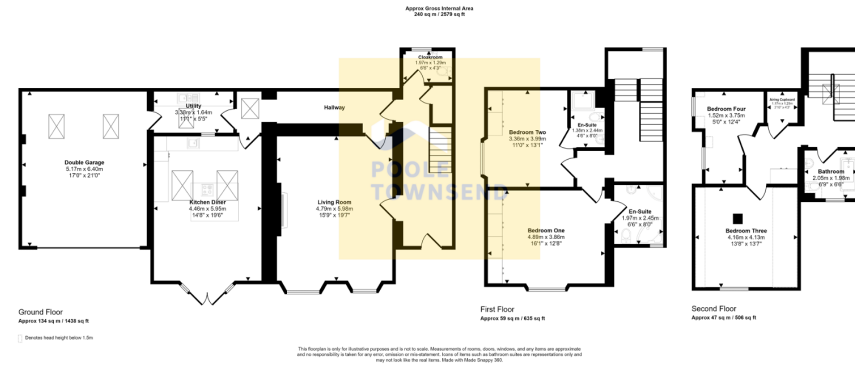
£725,000

4 3 1

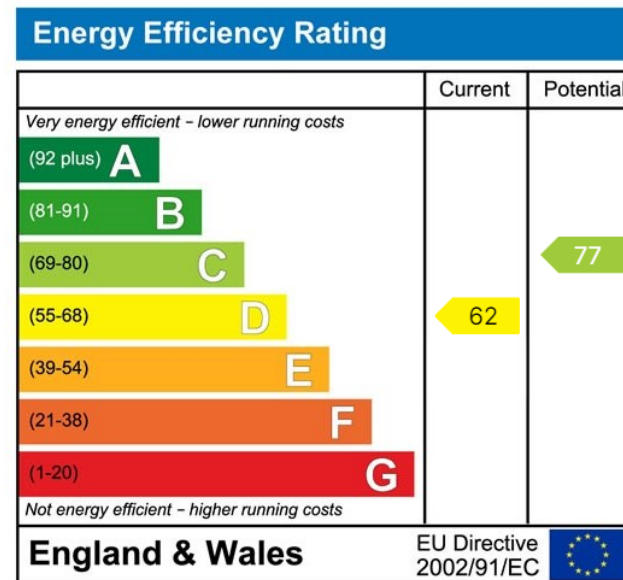


- Former Victorian Gentlemen's Residence • Wealth of Period Features
- Spectacular Elevated Position • Picturesque Views Across Morecambe Bay
- Large Bright Living Room • Open Plan Dining Kitchen
- 4 Double Bedrooms • Gated Driveway
- Council Tax Band F • Leasehold





A rare opportunity has arisen to acquire a former Victorian Gentleman's residence in one of the most prestigious developments. Situated in a spectacular elevated position and enjoying picturesque views across Morecambe bay and beyond, this fabulous country home could be your next abode. Boasting spacious living accommodation elegantly laid across three floors, along with a gated drive, integral double garage and woodland gardens, this property really does have it all.



Visit us at
www.pooletownsend.co.uk
enquiries@pooletownsend.co.uk

We are open
 Monday – Friday 9.00 – 5.00
 Saturday 9.00 – 1.00

Barrow 01229 811811
 Ulverston 01229 588111
 Grange 015395 33316
 Kendal 01539 734455
 Milnthorpe 015395 62044