



**POOLE
TOWNSEND**

Westcliffe Gardens, Grange over Sands

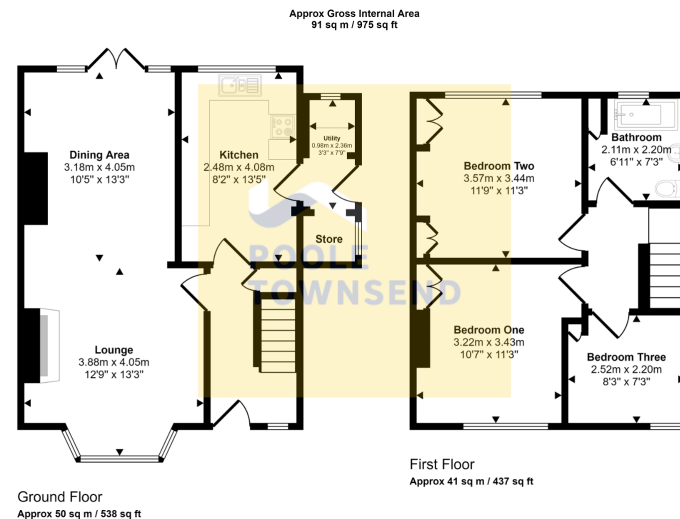
£325,000

3 1 1



- Impressive 3 Bedroomed Semi Detached Home
- Picturesque Views Across Morecambe Bay
- Naturally Bright and Airy
- Stylish Kitchen
- Council Tax Band C
- Located on the Edge of the Town
- Stylishly Decorated
- Well Manicured Lawn and Patio Gardens
- Freehold
- Early Viewing Recommended





This floorplan is only for illustrative purposes and is not to scale. Measurements of rooms, doors, windows, and any items are approximate and no responsibility is taken for any error, omission or mis-statement. Icons of items such as bathroom suites are representations only and may not look like the real items. Made with Maple Snappy 360.

Pleasantly located on the edge of the town centre and situated in an elevated position, this impressive semi-detached home enjoys picturesque views across Morecambe bay and beyond to Ingleborough Fells. Stylishly decorated throughout and benefitting from well-manicured lawn and patio gardens, this fabulous home is not to be missed. Naturally bright and airy, the accommodation includes an open plan lounge/diner with multi-fuel stove and doors opening out onto the rear garden, a stylish kitchen, three bedrooms and three piece bathroom. Within easy reach of the town centre's amenities and a local primary school, this property must be viewed to be appreciated.

Visit us at
www.pooletownsend.co.uk
enquiries@pooletownsend.co.uk

We are open
 Monday – Friday 9.00 – 5.00
 Saturday 9.00 – 1.00

Barrow 01229 811811
 Ulverston 01229 588111
 Grange 015395 33316
 Kendal 01539 734455
 Milnthorpe 015395 62044