



**POOLE
TOWNSEND**

11 Abbotsford House, Kentsford Road, Grange

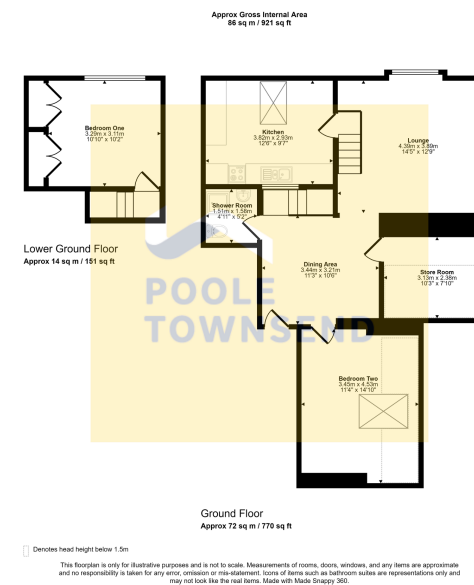
£220,000

🛏️ 2 🚿 1 🚗 1

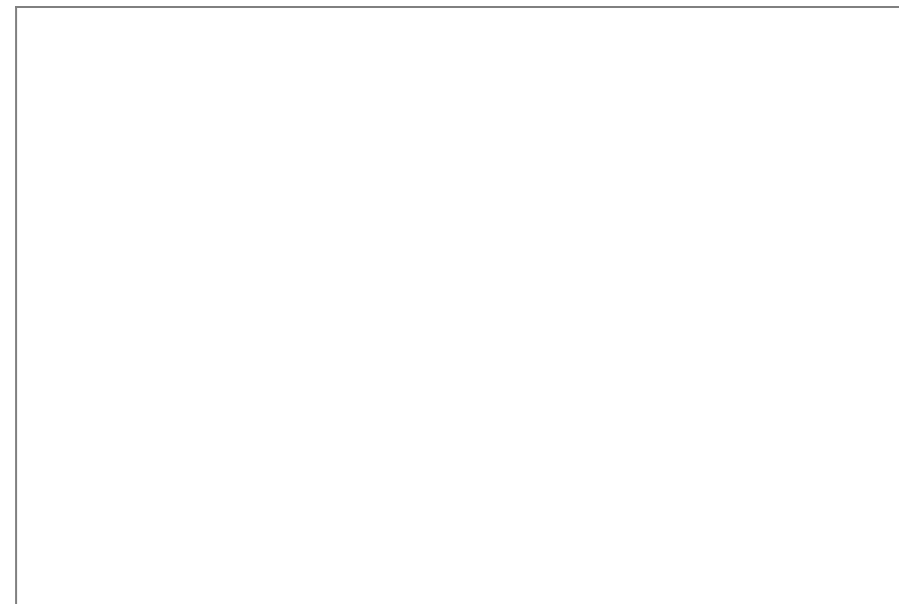


- 2 Bedroomed Apartment
- Naturally Bright and Airy
- Situated on the Second Floor
- Well Tended Communal Gardens
- Council Tax Band A
- Character Filled Period Property
- Views to Morecambe Bay
- Deceptively Spacious
- Leasehold
- No Upper Chain





Situated on the second floor of a character filled period property is this deceptively spacious two bedroom apartment. Naturally bright and airy throughout the accommodation includes an open plan lounge/diner with stairs up to a breakfast kitchen, two double bedrooms, a shower room and a large storage room. Enjoying picturesque views over rooftops towards Morecambe bay and surrounded by well-tended communal gardens, this property must be viewed to be appreciated. No Chain.



Visit us at
www.pooletownsend.co.uk
enquiries@pooletownsend.co.uk

We are open
 Monday – Friday 9.00 – 5.00
 Saturday 9.00 – 1.00

Barrow 01229 811811
 Ulverston 01229 588111
 Grange 015395 33316
 Kendal 01539 734455
 Milnthorpe 015395 62044